



13 Romney Drive Curlewis VIC

4 2 2

Nestled directly opposite the leafy expanse of Kakadu Park and just footsteps from the play spaces of Jones Park, this custom-built Curlewis home marries absolute quality with effortless lifestyle. From the moment you step inside, rich timber flooring flows beneath soaring ceilings, guiding you through a floorplan that adapts to your needs-whether you choose four generous bedrooms or opt for three bedrooms plus three distinct living zones.

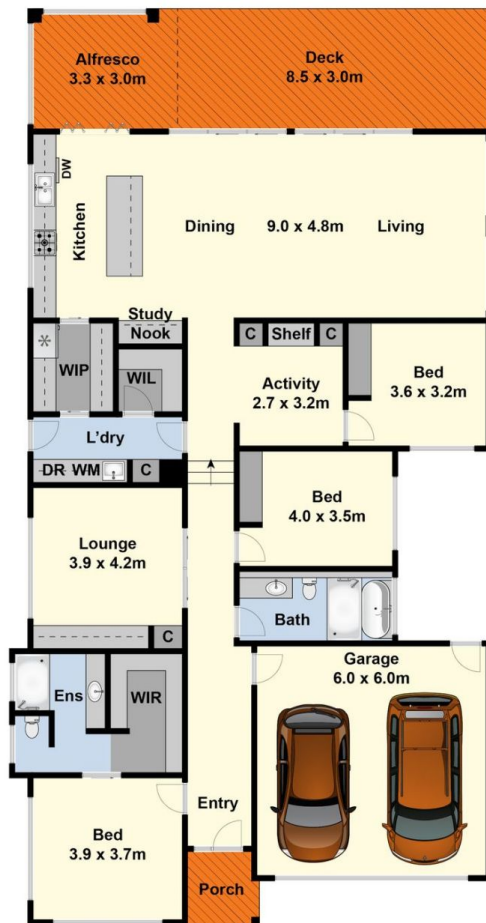
At the heart of the home, the gourmet kitchen is a chef's delight. Quality Bosch appliances stand ready for every culinary adventure, while a capacious walk-in pantry conceals all the essentials. A clever servery window invites conversation to spill out onto the northerly outdoor entertaining area, where sunshine fills every gathering with

Type : House
Price : \$975,000 - \$1,025,000
Land Size : 594 sqm
View : <https://www.maxwellcollins.com.au/sale/vic/geelong-district/curlewis/residential/house/8477186>



Laura Vander Noord
 03 5222 4711

[For full version visit the website](https://www.maxwellcollins.com.au)



Ground Floor



Site Plan