



12 Dublin Drive Grovedale VIC

3 2 2

This three-bedroom home offers the perfect blend of comfort and convenience for family living. The master bedroom features a walk-in robe and ensuite, while the remaining bedrooms include built-in robes. A spacious, light-filled L-shaped lounge provides a welcoming space. The generous kitchen/meals area boasts electric cooking and reverse cycle heating and cooling ideal for year-round comfort. The bathroom includes both a bath and a separate shower recess, catering to all family needs. Outside, a double carport is nestled among easy-care gardens, complemented by a handy garden shed. Located close to Waurin Ponds Shopping Centre and public transport, this home offers lifestyle and accessibility in one. An inspection is sure to impress.

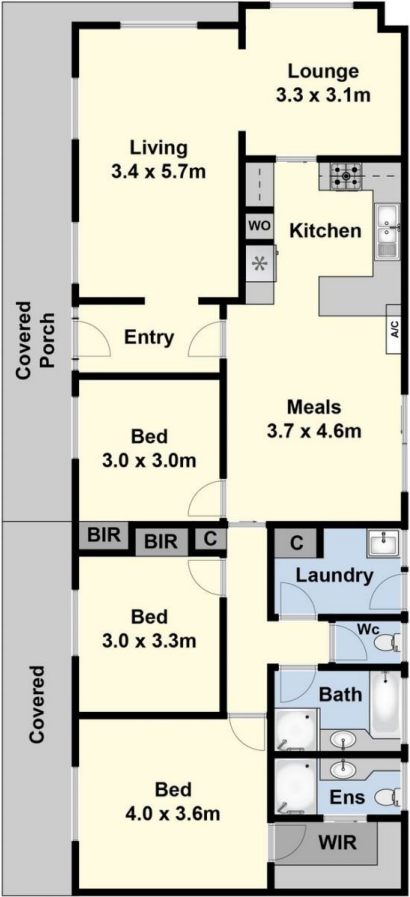
Type : House
Price : \$675,000 - \$695,000
Land Size : 588 sqm
View : <https://www.maxwellcollins.com.au/sale/vic/geelong-district/grovedale/residential/house/8419356>



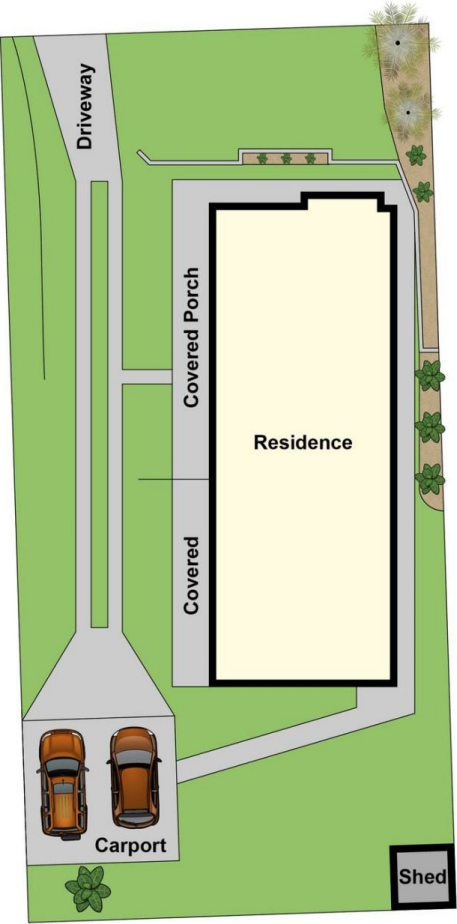
Duncan Skene
03 5222 4711



Laura Vander Noord
03 5222 4711



Ground Floor



Site Plan