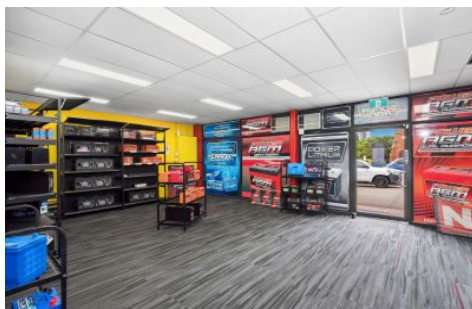


maxwell collins



180 Latrobe Terrace Geelong West VIC

- * Glass front showroom with office, kitchenette & amenities
- * High span warehouse with rear lane access
- * Approx. 300m2 floor area
- * Off street carparks
- * Opposite Geelong Railway Station
- * Commercial 2 zone

| | |
|----------------------|---|
| Type | : Showrooms/Bulky Goods |
| Price | : \$69,000pa plus GST & OG's |
| Building Size | : 300 sqm |
| Land Size | : 542 sqm |
| View | : https://www.maxwellcollins.com.au/lease/vic/geelong-district/geelong-west/commercial/showroomsbulky-goods/8382640 |



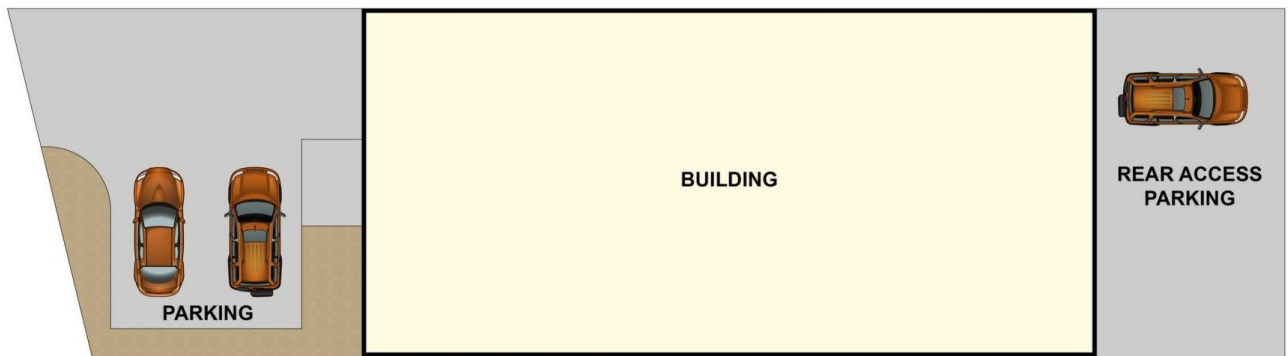
Paul Whyte
03 5222 4744



Mathew George
03 5222 4744



GROUND FLOOR



SITE PLAN