



335 Tower Hill Drive Lovely Banks VIC

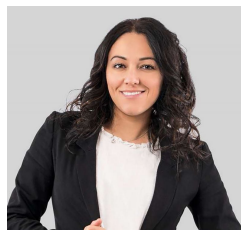
This exceptional 1.53-hectare (approx.) parcel of land offers a rare opportunity to build your forever home in a peaceful, sought-after setting just 15 minutes (approx.) from Geelong's CBD and Waterfront.

Enjoy stunning, views across Geelong, the sparkling bay, the You Yangs, and the distant Melbourne skyline - a breathtaking backdrop to your everyday lifestyle.

With ample space to design without compromise, this blank canvas invites you to craft a residence tailored entirely to your vision, with plenty of room for outdoor living, gardens, hobby spaces, or even a pool.

You'll enjoy the best of both worlds - a tranquil, semi-rural atmosphere with the convenience of city access. The Ring

Type	: Land
Price	: \$1,650,000 - \$1,750,000
Land Size	: 1.53 ha
View	: https://www.maxwellcollins.com.au/sale/vic/geelong-district/lovely-banks/residential/land/8370931



Ange Heskett
03 5222 4711

[For full version visit the website](https://www.maxwellcollins.com.au)