



33 Yosemite Avenue Curlewis VIC

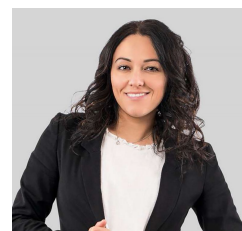
4 2 2

The perfect home for first-home buyers, young families, or savvy investors, with its open-plan kitchen, dining, and living area flows seamlessly to a secure backyard-ideal for entertaining and keeping an eye on the kids. The central kitchen features stone benchtops, stainless-steel appliances, a 900mm oven, gas cooktop, and an island breakfast bar. The master suite offers a walk-in robe and private ensuite, complemented by three additional bedrooms with built-in robes. Comfort is assured with ducted heating, split-system cooling, and a remote double garage with internal access. Enjoy low-maintenance gardens and a prime location across from Jones Park playground, close to Bayview Central Shopping Centre, schools, public transport, and the scenic Bellarine Rail Trail. This is the lifestyle upgrade you've been waiting

Type : House
Price : \$625,000 - \$655,000
Land Size : 420 sqm
View : <https://www.maxwellcollins.com.au/sale/vic/geelong-district/curlewis/residential/house/8328084>



Duncan Skene
03 5222 4711



Ange Heskett
03 5222 4711

[For full version visit the website](https://www.maxwellcollins.com.au)

