



6 Raptor Place South Geelong VIC

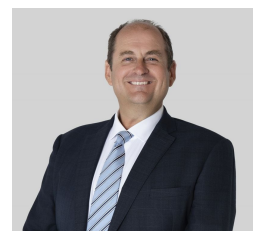
2 🚗

- * Approx. 224m2 ground floor and mezzanine (approx. 42m2)
- * High span with high roller door
- * Office, kitchenette, amenities, 3 phase power, heating and cooling
- * Located in popular industrial estate
- * Industrial 1 zone

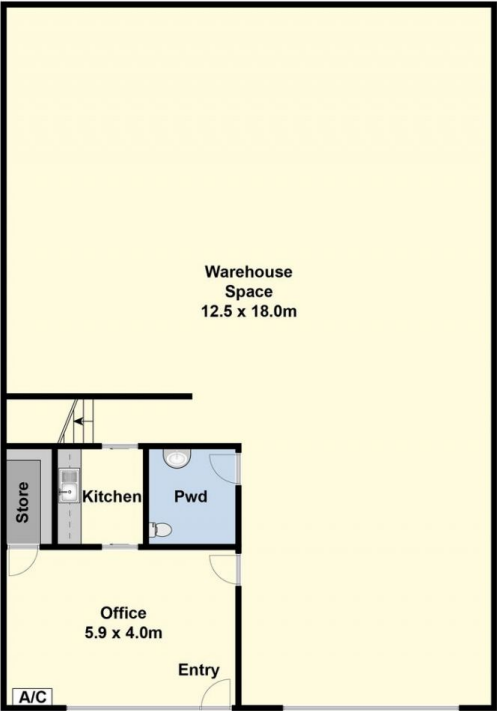
Type : Industrial
Price : \$36,000pa + GST & O/Gs
Building Size : 266 sqm
View : <https://www.maxwellcollins.com.au/lease/vic/geelong-district/south-geelong/commercial/industrial/8323705>



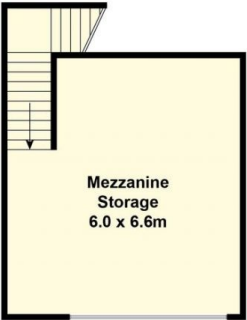
Paul Whyte
03 5222 4711



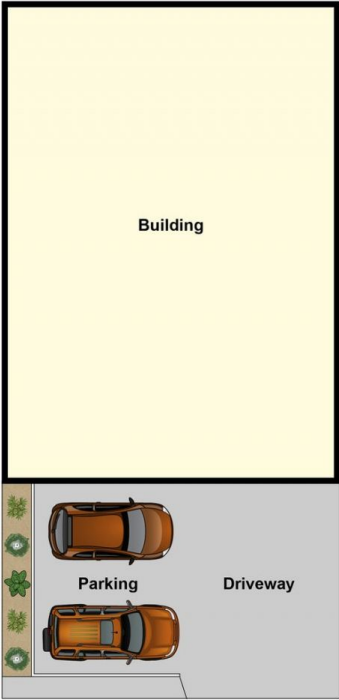
Mathew George
03 5222 4711



Ground Floor



Upper Floor



Site Plan