



## 19 Temt Terrace Grovedale VIC

4 2 2

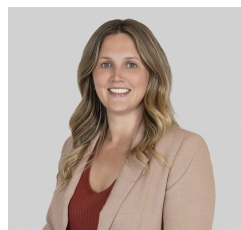
Nestled in a peaceful street just moments from Waurm Ponds Station, this well-appointed four-bedroom home offers a lifestyle of ease, space and unbeatable convenience. Whether you're entering the market, expanding your investment portfolio, or downsizing into something more manageable, this one ticks all the boxes.

Step inside to find a thoughtfully designed layout that puts everyday comfort at the forefront. The light-filled open-plan kitchen, living and dining area forms the heart of the home-warm, inviting, and spacious enough for the whole family. The kitchen is equipped with stone benchtops, a Technika 900mm oven and 5-burner gas cooktop, built-in pantry, integrated microwave, and Westinghouse dishwasher-providing all the essentials for daily living or

**Type** : House

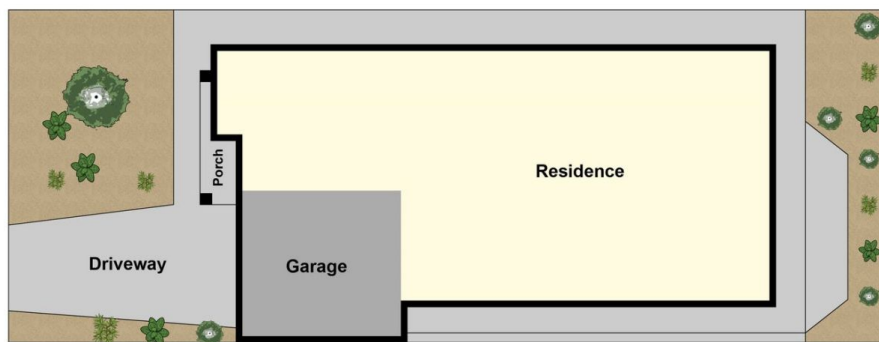
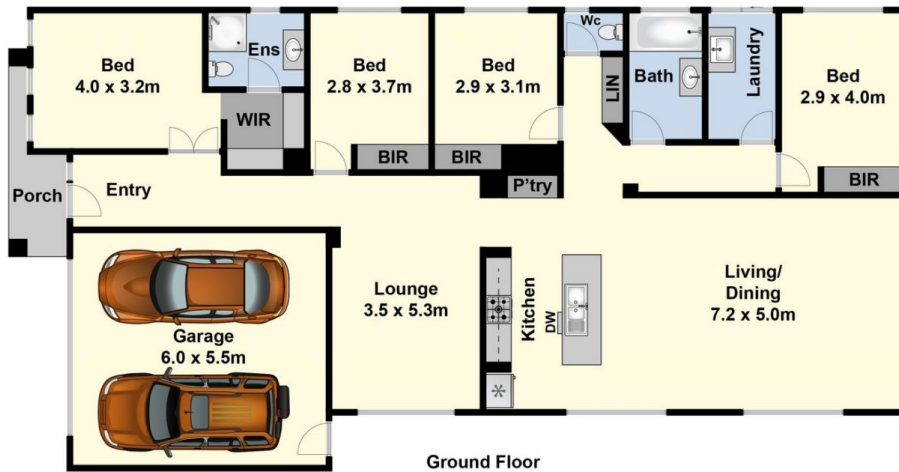
**Price** : \$735,000 - \$750,000

**View** : <https://www.maxwellcollins.com.au/sale/vic/geelong-district/grovedale/residential/house/8320168>



**Meika Gunning**  
03 5222 4711

[For full version visit the website](https://www.maxwellcollins.com.au)



Site Plan