



## 8 Mollers Lane Leopold VIC

4 2 2

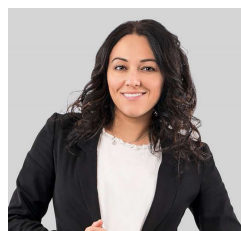
Experience the pinnacle of contemporary luxury in this stunning 4-bedroom, 2-bathroom display home in Leopold's prestigious Sanctuary Springs Estate. Designed with style, functionality, and superior craftsmanship in mind, this residence is a true standout.

The highlight of this home is the luxurious main bedroom, complete with a charming bay window, a dedicated makeup space, and an expansive walk-in robe. The ensuite is equally impressive, boasting a deep bathtub, a double vanity, a large shower, and a separate toilet for ultimate comfort.

At the heart of the home, the open-plan kitchen, dining, and living area exudes elegance, featuring a striking 1200mm

**Type** : House  
**Price** : \$985,000 - \$1,025,000  
**Land Size** : 519 sqm  
**View** : <https://www.maxwellcollins.com.au/sale/vic/geelong-district/leopold/residential/house/8310585>

[For full version visit the website](https://www.maxwellcollins.com.au)



**Ange Heskett**  
03 5222 4711



**Meika Gunning**  
03 5222 4711

