



6 Lucca Court Leopold VIC

4 2 2

Designed with outdoor entertaining in mind this home is sure to appeal with its expansive undercover deck complete with pizza oven and palm trees giving you the feeling of being on holidays all year round. Perfect for the growing family with four generous bedrooms, the master with a large walk-in robe and ensuite that includes a double vanity, whilst the other three children's bedrooms are located near the family bathroom. Two spacious living areas are separated by a well-appointed kitchen with stainless steel appliances and a walk-in pantry. The family room links seamlessly with the deck to create that sensation of bringing the outside in. Freshly painted throughout the home is now turn key ready for a new family to move into. Set on approx. 583sqm at the top of the court there is easy access to Geelong as well as to The

Type : House
Price : \$685,000 - \$715,000
Land Size : 583 sqm
View : <https://www.maxwellcollins.com.au/sale/vic/geelong-district/leopold/residential/house/8261234>

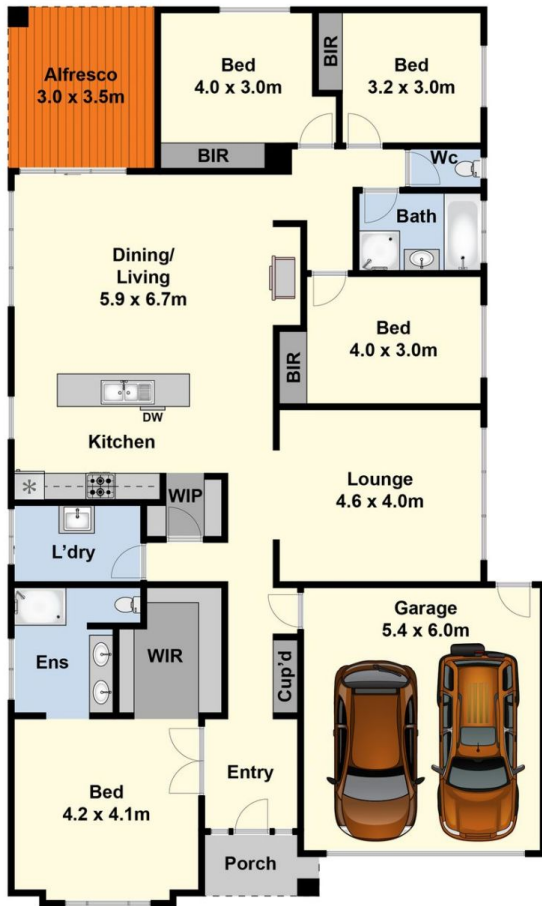


Duncan Skene
03 5222 4711

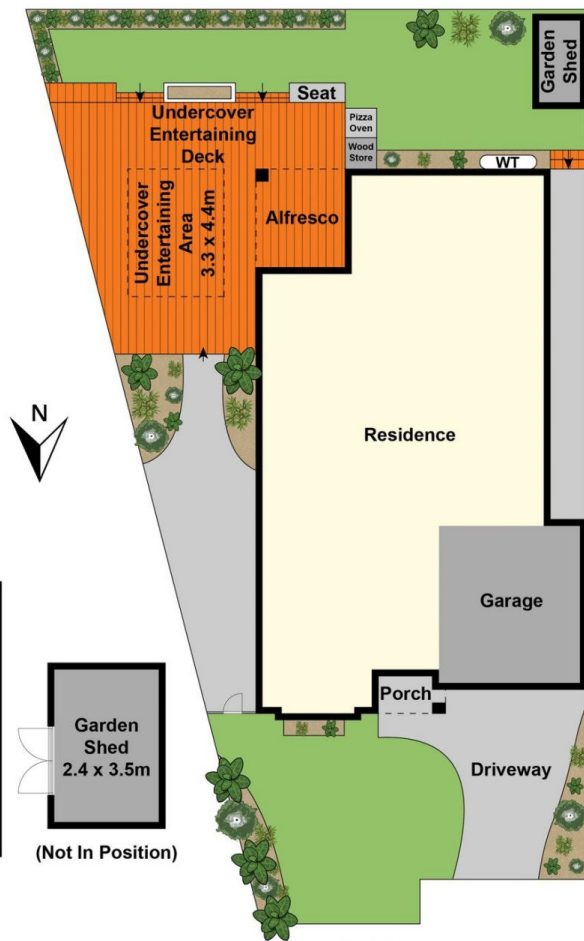


Lois Wilson
03 5222 4711

[For full version visit the website](https://www.maxwellcollins.com.au)



Ground Floor



Site Plan