



12/259 Bellerine Street South Geelong VIC

3 **2** **2**

Well positioned on the fringe of the city centre and just a short walk to the new South Geelong train station this is a must see for commuters who want something that is a cut above the rest. A gourmet's kitchen with 900mm induction cooktop and oven plus a walk-in pantry overlooks the generous living/dining room which opens to a fabulous undercover area complete with café blinds for year-round entertaining.

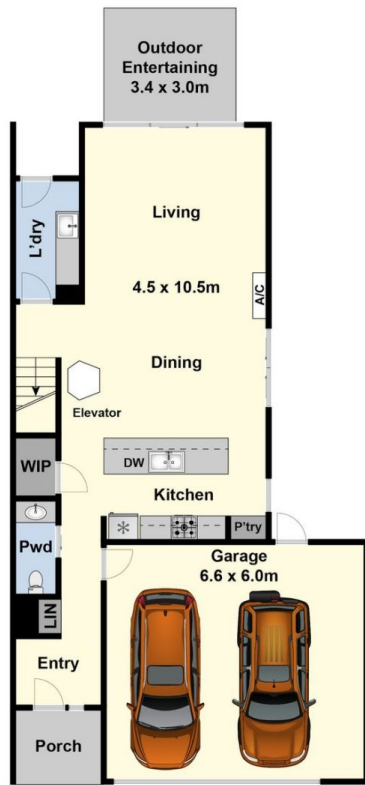
A personal elevator takes you to the second floor which offers three double bedrooms, the master of generous proportions with a huge walk-in robe and large ensuite, plus a study alcove or space for home office. A double garage with internal access adjoins an expansive garden shed which is ideal for storage of those extras like bikes

Type : Townhouse
Price : \$885,000 - \$925,000
Land Size : 327 sqm
View : <https://www.maxwellcollins.com.au/sale/vic/geelong-district/south-geelong/residential/townhouse/8245489>

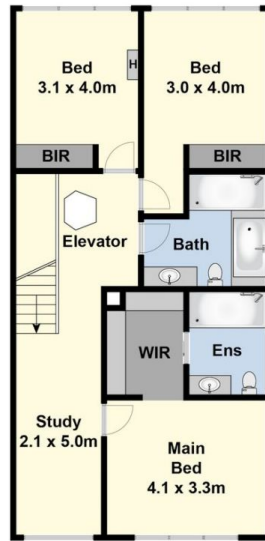


Lois Wilson
03 5222 4711

[For full version visit the website](https://www.maxwellcollins.com.au)



Ground Floor



First Floor



Site Plan