



## 4/15 Natika Court Grovedale VIC

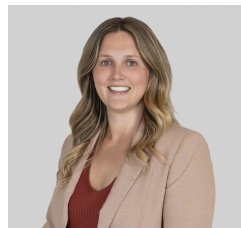
2 1 1

This charming two-bedroom unit is move-in ready, offering comfort, convenience, and fresh modern updates.

Step inside to a welcoming living area that flows seamlessly into the kitchen and dining space. Both bedrooms are carpeted with built-in robes and are serviced by a well-appointed bathroom featuring a shower, bathtub, single vanity, and a separate toilet for added convenience. The kitchen boasts ample storage and connects through the laundry to the outdoor area.

The backyard includes an undercover space with new laser light roofing-perfect for outdoor dining or entertaining-with external access to the single garage. Freshly renovated with new curtains, a full repaint, and updated flooring in the

**Type** : Unit  
**Price** : \$485,000 - \$515,000  
**View** : <https://www.maxwellcollins.com.au/sale/vic/geelong-district/grovedale/residential/unit/8243930>

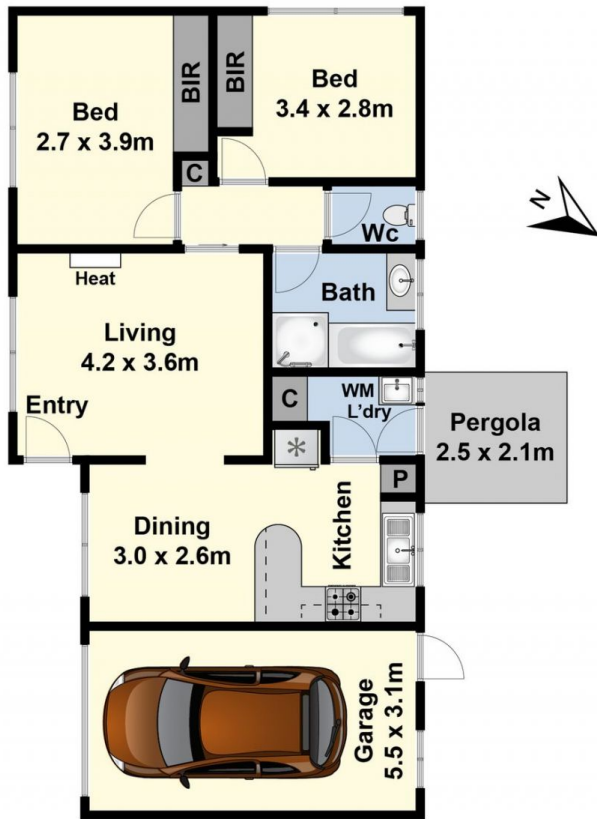


**Meika Gunning**  
03 5222 4711

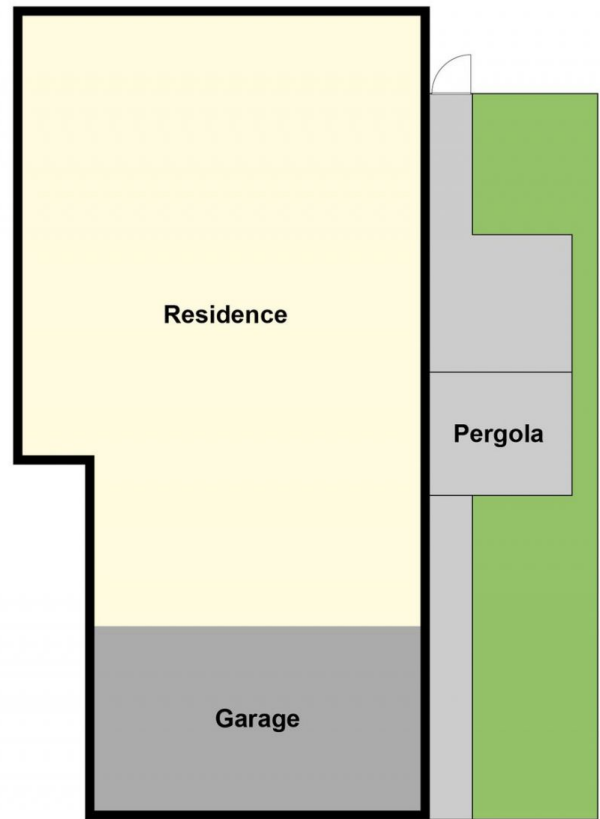


**Lois Wilson**  
03 5222 4711

[For full version visit the website](https://www.maxwellcollins.com.au)



Ground Floor



Site Plan