



10 Robertson Street Thomson VIC

2 1 1

Discover the perfect blend of comfort and convenience with this character filled home located close to the Geelong CBD.

- Two Bedrooms
- Light filled separate living area
- Ample cupboard space in kitchen
- Large back yard
- Multiple split systems for year round comfort

Located in a tranquil Thomson neighbourhood with easy access to the highway and schools. Register to inspect today!

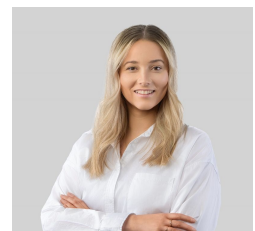
DISCLAIMER: This property has been virtually staged, NO

Type : House

View : <https://www.maxwellcollins.com.au/lease/vic/geelong-district/thomson/residential/house/8193549>



Alisha Cavallaro
03 5222 4711



Macyden Gasper
03 5222 4711

[For full version visit the website](https://www.maxwellcollins.com.au)