

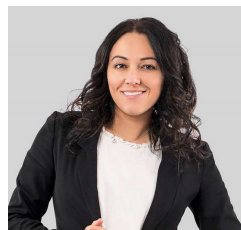
209 Church Street Manifold Heights VIC

Nestled in the heart of the highly sought-after suburb of Manifold Heights, this expansive 780m² block of land offers an exceptional opportunity to secure your future in a premier location. Positioned within close reach of a wide selection of in-demand primary and secondary schools, this coveted address promises lifestyle convenience and family appeal.

Located on a popular street, this block is just a short stroll to the vibrant Minerva Road shopping strip and only a quick drive to the iconic Pakington Street, renowned for its trendy cafes and boutique shops. With excellent transport options nearby and seamless access to the Melbourne Ring Road, this prime allotment combines urban accessibility with the charm of a community-focused neighborhood.

[For full version visit the website](https://www.maxwellcollins.com.au)

Type	: Land
Price	: \$750,000
Land Size	: 780 sqm
View	: https://www.maxwellcollins.com.au/sale/vic/geelong-district/manifold-heights/residential/land/8190879



Ange Heskett
03 5222 4711