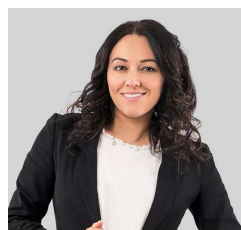


## Mount Duneed

Presenting a fantastic opportunity to secure a prime 416m<sup>2</sup> block of land in the highly sought-after suburb of Mount Duneed. Positioned close to the ever-expanding Armstrong Creek Town Centre, this block offers the perfect balance of convenience and lifestyle. Enjoy easy access to Waurn ponds Train station & shopping centre, The Geelong CBD & SurfCoast as well as the Ring Road, making your commute to Melbourne a breeze. Whether you're looking to build your dream home or make a smart investment in a thriving community, this perfectly sized block offers endless potential in a location poised for growth.

**Type** : Land  
**Price** : \$ 365,000  
**Land Size** : 416 sqm  
**View** : <https://www.maxwellcollins.com.au/sale/vic/geelong-district/mount-duneed/residential/land/8167438>



**Ange Heskett**  
 03 5222 4711



**Nick Lord**  
 03 5222 4711