



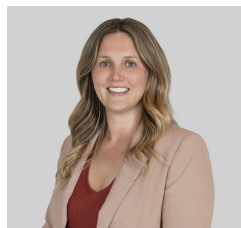
## 137 Stoneleigh Crescent Highton VIC

3 2 2

Set on a low maintenance compact block, this is your chance to secure a beautifully designed 3-bedroom, 2-bathroom home directly across from the reserve bordering the Barwon River. From the moment you enter, you'll appreciate the thoughtful layout that blends style and practicality for modern living. The open-plan kitchen, living, and dining area flows seamlessly into an outdoor entertaining space, featuring an exposed aggregate courtyard perfect for gatherings.

The kitchen, with its large island bench, 900mm Omega stand-alone oven, and walk-in pantry, is ideal for cooking while staying connected with family. A separate powder room and a spacious laundry located near the kitchen, enhance everyday living. At the back, the ground-floor main

**Type** : Townhouse  
**Land Size** : 370 sqm  
**View** : <https://www.maxwellcollins.com.au/sale/vic/geelong-district/highton/residential/townhouse/8131930>

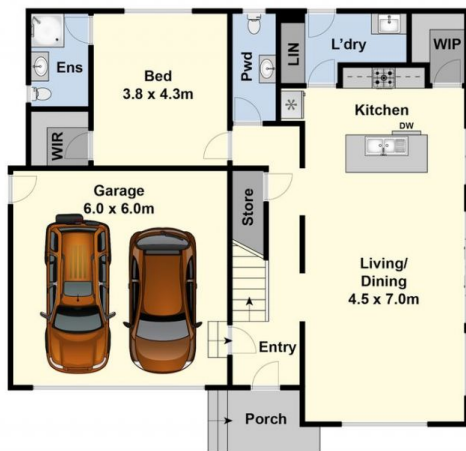


**Meika Gunning**  
03 5222 4711

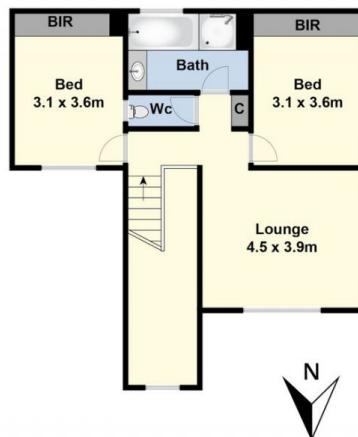


**Nick Lord**  
03 5222 4711

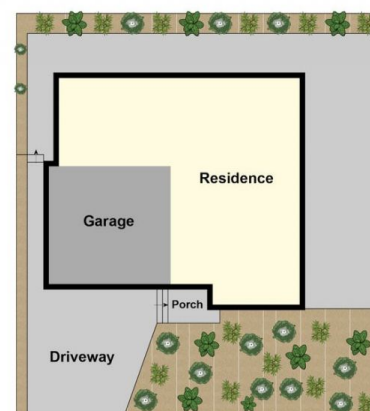
[For full version visit the website](https://www.maxwellcollins.com.au)



Ground Floor



First Floor



Site Plan