



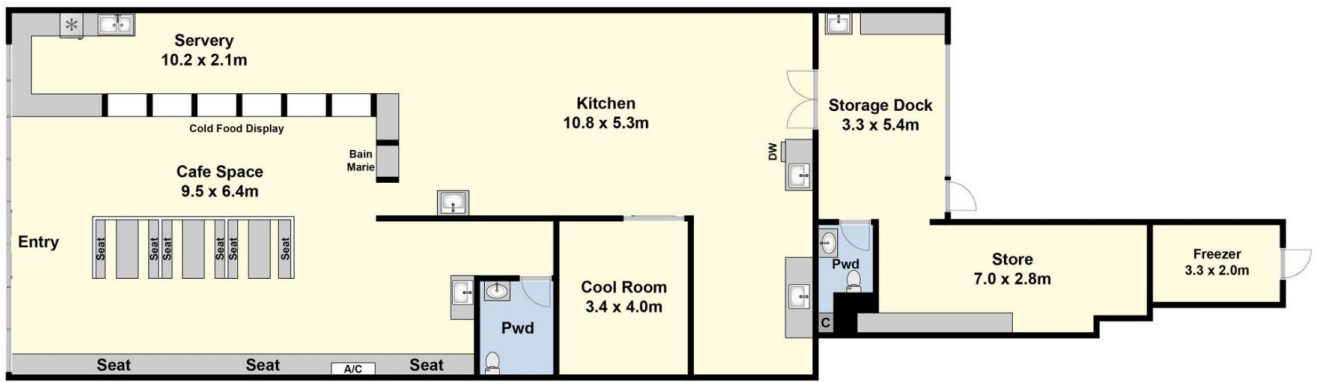
## 64 Newcombe Street Portarlington VIC

- \* 250m2 with current hospitality fitout
- \* Commercial kitchen, booth seating, amenities, coolroom, freezer & grease traps
- \* Rear storage, rear roller delivery door and laneway access
- \* CCTV, exhaust and canopy, security system
- \* Commercial 1 zone

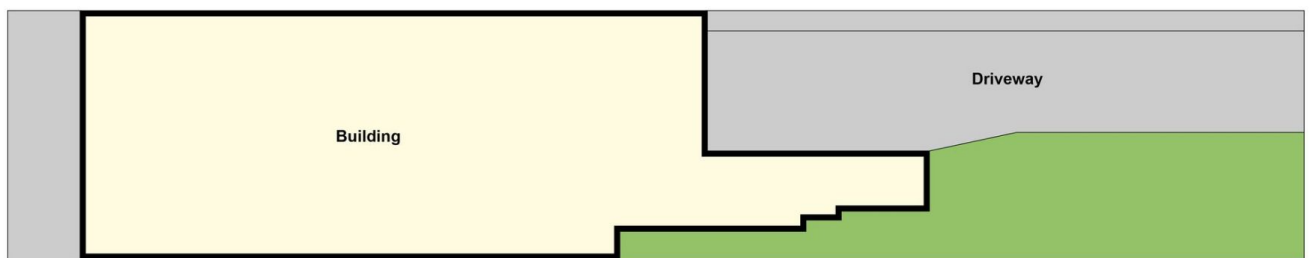
<b>Type</b>	: Retail
<b>Price</b>	: Contact Agent
<b>Building Size</b>	: 250 sqm
<b>View</b>	: <a href="https://www.maxwellcollins.com.au/lease/vic/geelong-district/portarlington/commercial/retail/8125627">https://www.maxwellcollins.com.au/lease/vic/geelong-district/portarlington/commercial/retail/8125627</a>



**Paul Whyte**  
03 5222 4711



Ground Floor



Site Plan