



13 Kinnon Avenue Belmont VIC

3 1 1

An exciting opportunity awaits you with this brick veneer home on an expansive allotment of approximately 743sqm that has concept plans for two townhouses ready for you to begin your next project (STCA). Currently leased, the home offers the astute investor the ability to receive a return on your investment whilst you prepare to redevelop the site. Centrally located in one of Geelong's most popular suburbs surrounded by good schools and shops with excellent access to the Marshall train station and the Surf Coast as well. Comprising three bedrooms (all with built-in robes), a kitchen with meals area and a spacious north facing lounge room there is ample room for the young family too that is looking for that extra space in the backyard for children and pets to play. This is a home that offers lots of options with room to move.

[For full version visit the website](https://www.maxwellcollins.com.au/sale/vic/geelong-district/belmont/residential/house/8076744)

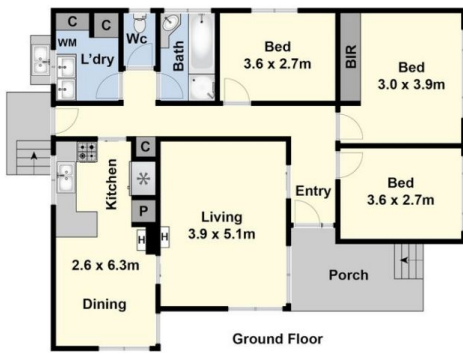
Type : House
Land Size : 743 sqm
View : <https://www.maxwellcollins.com.au/sale/vic/geelong-district/belmont/residential/house/8076744>



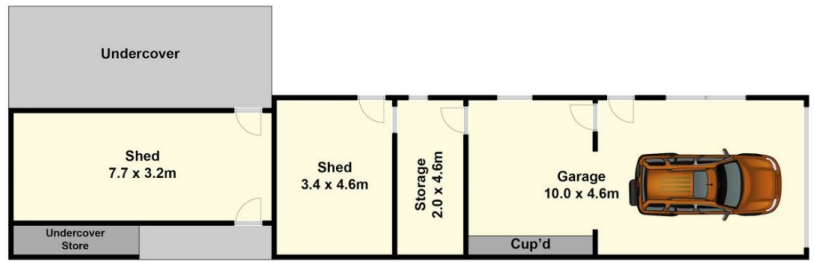
Duncan Skene
03 5222 4711



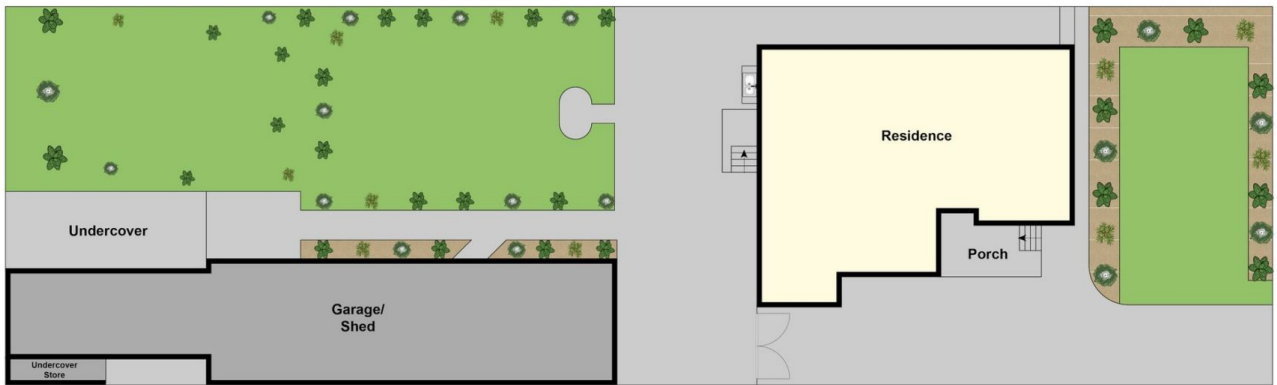
Lois Wilson
03 5222 4711



Ground Floor



(Not In Position)



Site Plan