



10 Sydney Avenue Geelong VIC

3 1 1

Nestled behind its leafy archway sits a humble Victorian cottage that is bursting with potential, waiting to be transformed. Positioned in an enviable location merely a short walk from everything Geelong has to offer. The home boasts an ideal floorplan, with a central hallway, large rooms and high ceilings. Breathe life back into this wonderful home from yesteryear!

Featuring a light-filled front lounge, three large bedrooms, a central bathroom, a kitchen with gas upright oven and an adjacent meals area. Outside features a private courtyard with an established lemon tree, external laundry, toilet and single garage with handy rear access via Richardson Place.

Type : House
Price : \$ 700,000
Land Size : 289 sqm
View : <https://www.maxwellcollins.com.au/sale/vic/geelong-district/geelong/residential/house/8065218>

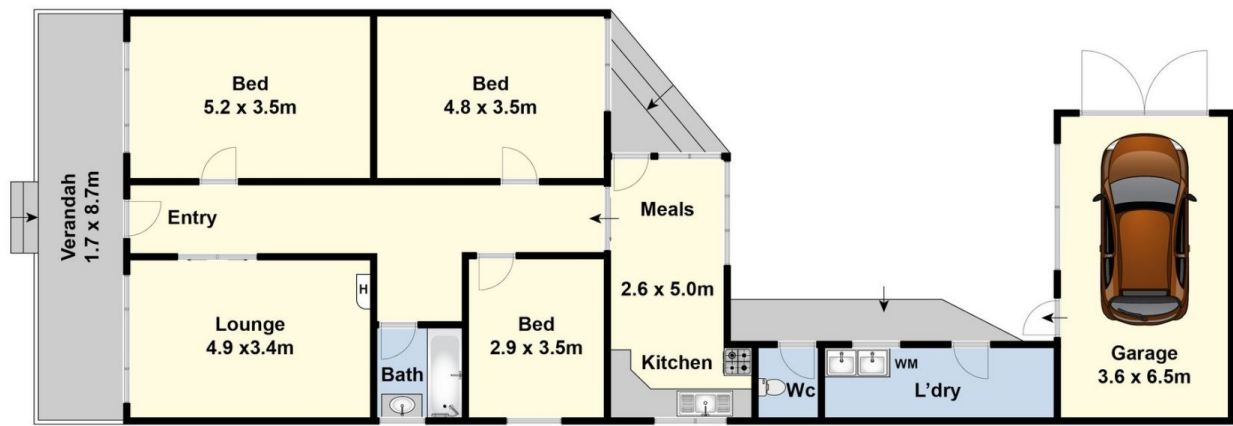
[For full version visit the website](https://www.maxwellcollins.com.au)



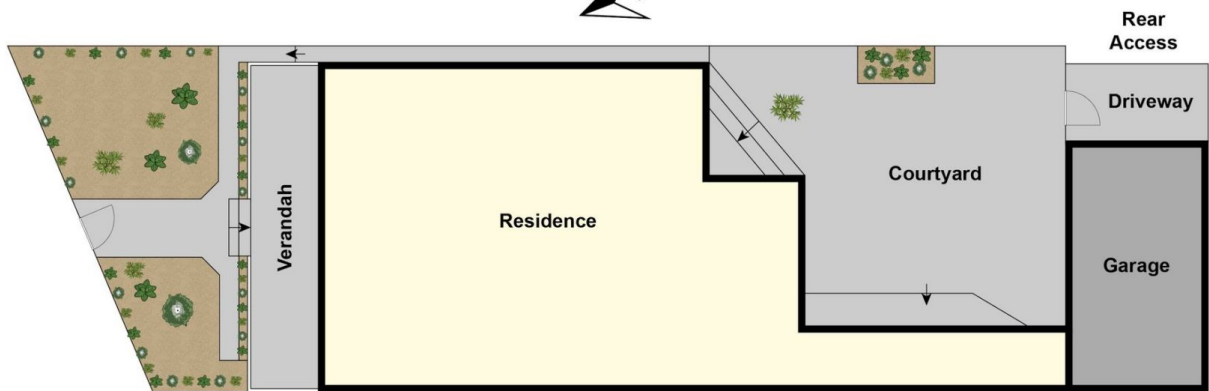
Duncan Skene
03 5222 4711



Shaun Carroll
03 5222 4711



Ground Floor



Site Plan