



2 Raydon Court Grovedale VIC

3 2 2

Situated in a quiet court location, this architecturally designed home is substantial in size and is sure to impress. Ideally suiting large families and renovators looking for a special project, retro-style fittings are featured throughout, including light fittings, mirrored walls, archways, built-in bars and timber panelling.

Featuring a large light-filled living space with dining area, a kitchen of generous size with electric cook-top, oven and an adjacent meals area, the rear lounge is a fantastic entertaining space with built-in bar and serving window from the kitchen. The main bedroom includes a walk-in robe and ensuite, two further bedrooms include built-in robes and are serviced by a family bathroom with shower, bath and separate toilet. A study is also an optional smaller

Type : House
Land Size : 672 sqm
View : <https://www.maxwellcollins.com.au/sale/vic/geelong-district/grovedale/residential/house/8053453>

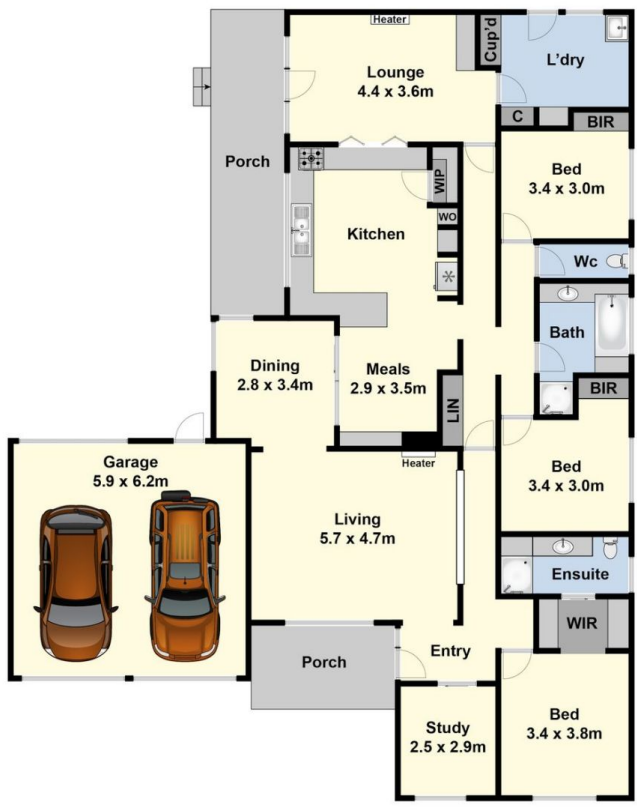


Shaun Carroll
03 5222 4711

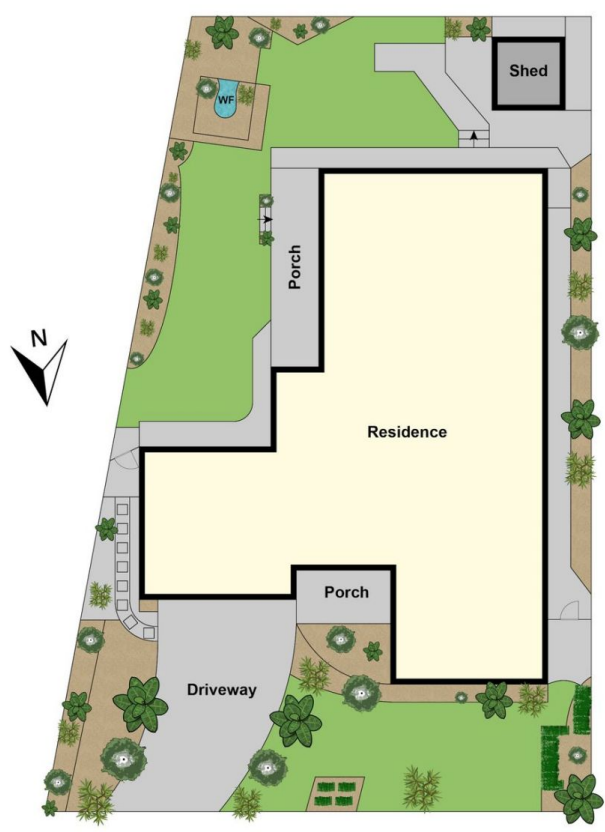


Eugene Carroll
03 5222 4711

[For full version visit the website](https://www.maxwellcollins.com.au)



Ground Floor



Site Plan