



4A Warrawee Avenue Norlane VIC

3 2 1

A rare opportunity, one of three immaculately finished townhouses. Built to both maximise internal space and capture the beauty of the surrounds. Quality fittings and thoughtfully designed for comfort. Features include;

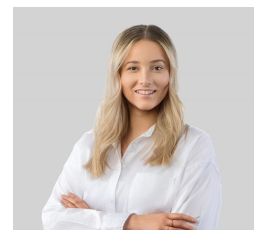
- All bedrooms are carpeted two with built in robes, sheer and block out blinds throughout.
- Master bedroom with a walk-in robe and private ensuite.
- Centrally located bathroom with separate bath, shower and toilet.
- Separate laundry with access to the backyard.
- Open plan kitchen/living/ dining with lots of storage, 4 burner gas cooktop and electric oven.
- Single carport with yard access through a gate.
- Triple sliding glass doors to the backyard.

Type : Townhouse

View : <https://www.maxwellcollins.com.au/lease/vic/geelong-district/norlane/residential/townhouse/8050788>



Alisha Cavallaro
03 5222 4711



Macyden Gasper
03 5222 4711

[For full version visit the website](https://www.maxwellcollins.com.au)