



760 Lighthouse Road Cape Otway VIC

9 5 3

"Shearwater Cottages" presents a unique and idyllic country lifestyle on the doorstep of the Great Otway National Park and surrounded by fabulous local beaches.

- Five dwellings in all with the main home, or caretaker's residence, plus four free standing cottages
- Provides great flexibility for schools, clubs, holiday rentals or for the extended family
- The ideal tree change/sea change combination with room for further expansion (STCA)
- Includes a large machinery shed and five main paddocks making it suitable for horses or other livestock
- 30 minutes drive from Apollo Bay, 35 minutes drive from Joanna and just 7 mins drive to the iconic Cape Otway Lighthouse

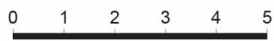
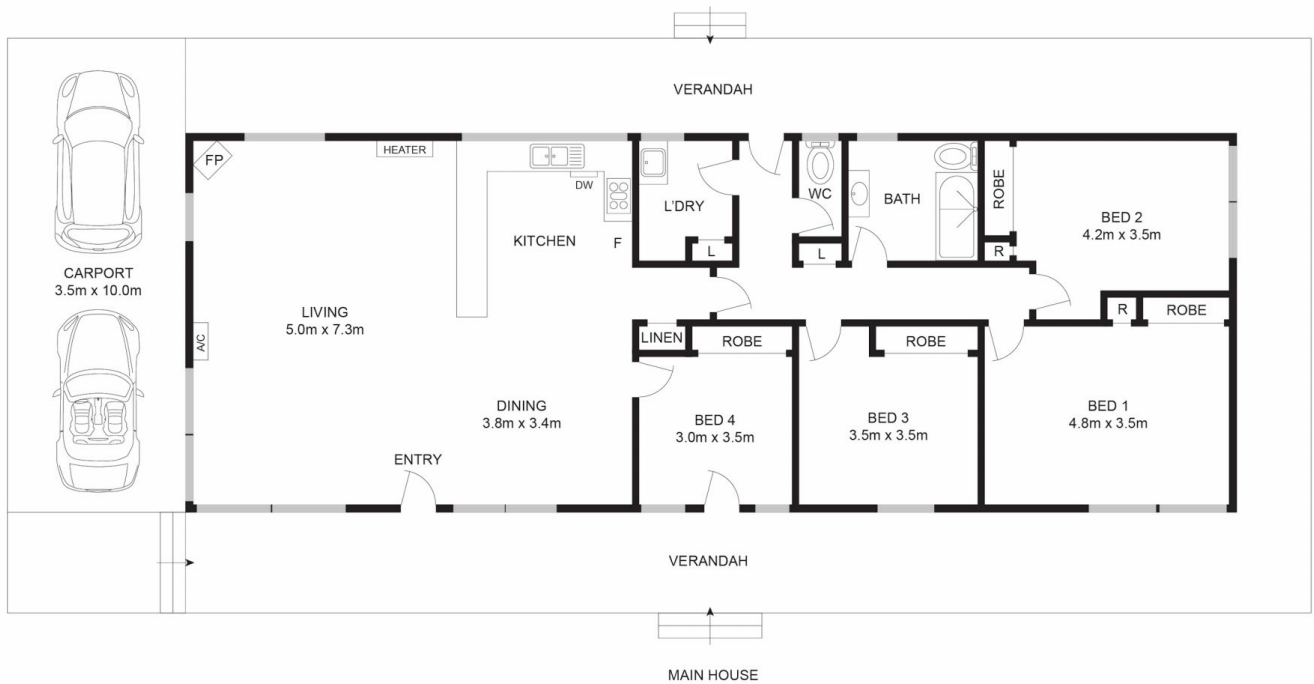
Type : Acreage/Semi-Rural
Price : \$2,275,000 - \$2,475,000
Land Size : 11.02 ha
View : <https://www.maxwellcollins.com.au/sale/vic/great-ocean-rd-otway-ranges/cape-otway/residential/acreagesemirural/8029934>



Lois Wilson
03 5222 4711

[For full version visit the website](https://www.maxwellcollins.com.au)

760 Lighthouse Road, Cape Otway



Scale in meters. Indicative only. Dimensions are approximate. All information contained herein is gathered from sources we believe to be reliable. However, we cannot guarantee its accuracy and interested persons should rely on their own enquiries.