

8 Bendle Street East Geelong VIC

3 1 2

This 1960's brick beauty is situated on a corner allotment of 725m2 approx. and provides plenty of potential to the astute purchaser. Located in East Geelong; it has easy access to the CBD, Geelong High School, Tate St Primary and St Margarets, Newcomb Central and Bellarine Village and the Botanical Gardens and Waterfront. Upon entrance you are greeted with a spacious living and dining area which adjoins the kitchen; all of which enjoy a leafy outlook. There are 3 bedrooms (or 2 and a study), a family bathroom, separate toilet and another separate shower room. The sunroom leads you out to the spacious rear yard and to the garage that has easy side access from Bendle Court. Currently leased for \$380 per week on a month-to-month basis. An opportunity not to be missed!

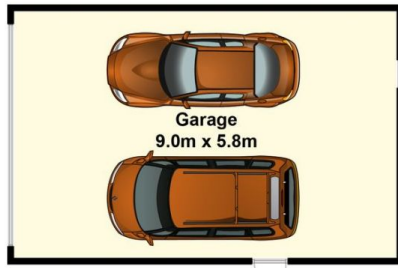
Type : House
Land Size : 725 sqm
View : <https://www.maxwellcollins.com.au/sale/vic/geelong-district/east-geelong/residential/house/7987287>



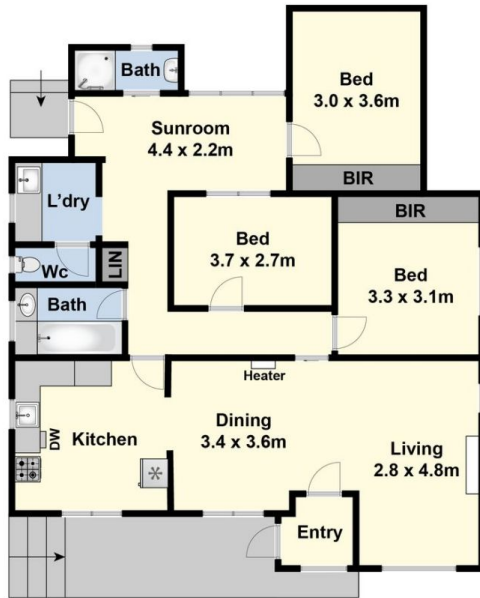
Laura Vander Noord
 03 5222 4711



Duncan Skene
 03 5222 4711



(Not In Position)



Ground Floor



Site Plan