



8 Lumeah Street Norlane VIC

2 1 1

Situated in one of Norlane's handiest locations this 2BR home represents great value and enormous potential for a wide variety of buyers. Whether you're looking to break into the property market for the first time or a prospective development site (STCA), this property could be just what you're looking for!

As well as providing a massive block size of 623m2 (approx.) the home also boasts a fresh interior with neutral tones and provides two well sized bedrooms, spacious lounge, central bathroom and functional kitchen/meals area. Outside you'll find a huge backyard with loads of potential for a 2-part subdivision (STCA).

Situated in a quiet street with plenty of local amenities only

[For full version visit the website](https://www.maxwellcollins.com.au)

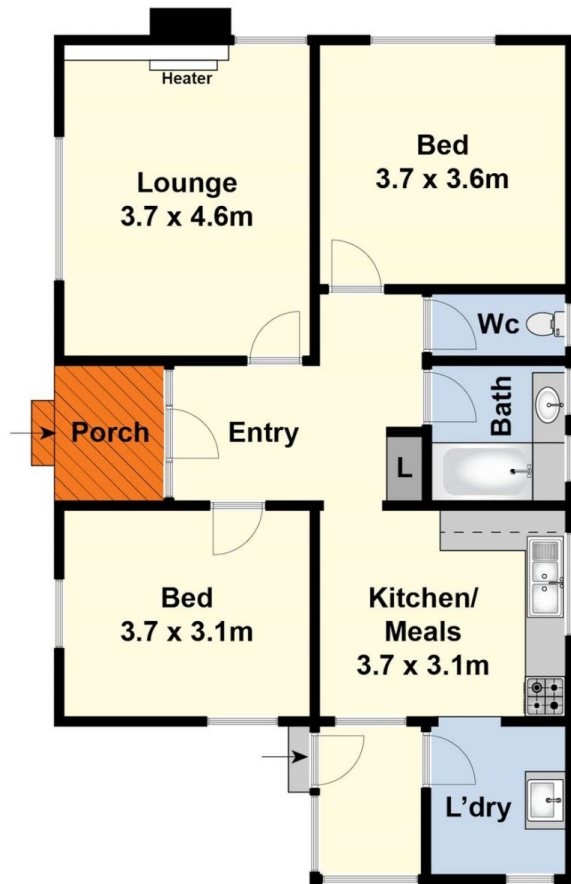
Type : House
Price : \$ 395,000
Land Size : 623 sqm
View : <https://www.maxwellcollins.com.au/sale/vic/geelong-district/norlane/residential/house/7974429>



Simon Braybrook
03 5222 4711



Lois Wilson
03 5222 4711



Ground Floor



Site Plan