



## 20 Arnold Circuit Charlemont VIC

3 2 2

This stunning home is only two years old, quality built by Henley Homes and situated in the picturesque Glenlee Estate of Charlemont. Well-presented and spacious throughout, the home is sure to impress. Currently leased till October 2024 at \$490 per week, the home would make a fantastic addition to an investment portfolio or first home.

**Price** : \$580,000 - \$610,000  
**Land Size** : 350 sqm  
**View** : <https://www.maxwellcollins.com.au/sale/vic/geelong-district/charlemont/residential/house/7966850>

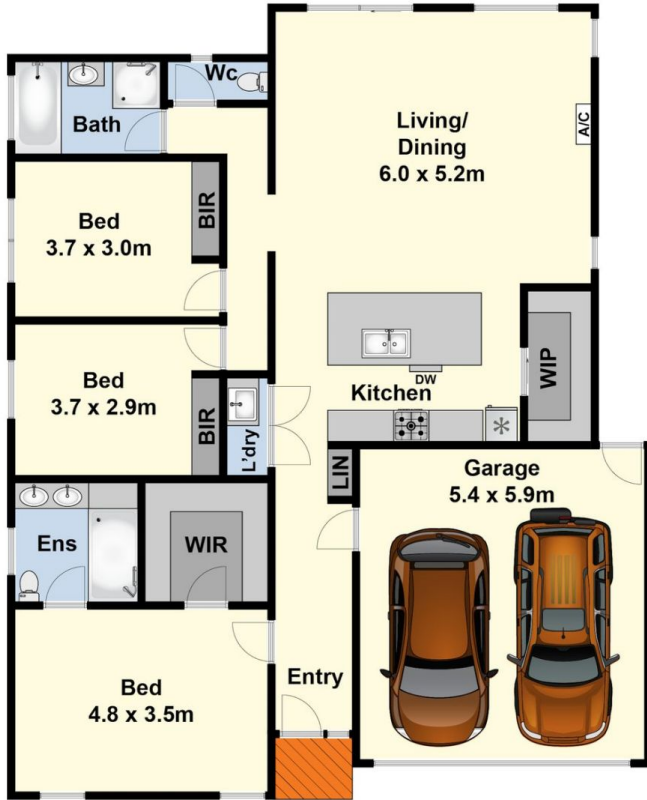
Featuring a spacious open plan living space which is the heart of the home, a functional and stylish kitchen with stone benchtops, gas cooking, oven, dishwasher, and a fantastic size butlers pantry. The dining/living space is north facing and has an abundance of natural light. A main bedroom of generous size with walk-in robe and ensuite with stone bench top, double vanity and large shower, a further two bedrooms are good size with built-in robes and are serviced by a family bathroom with shower, bath and separate toilet. A European laundry makes good use of



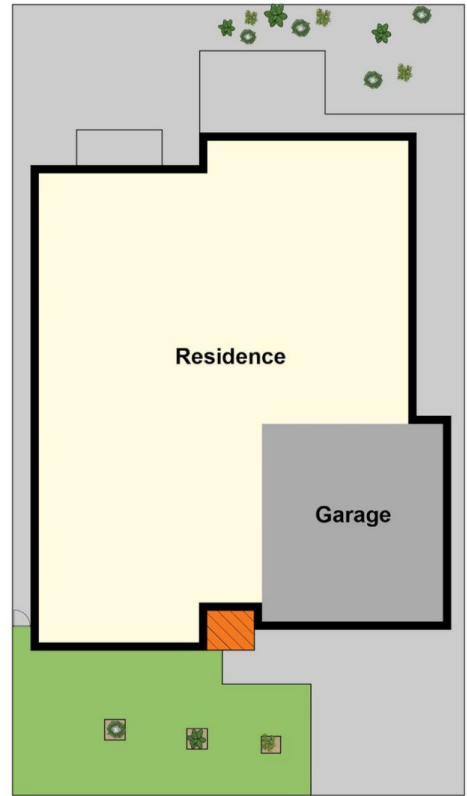
**Shaun Carroll**  
03 5222 4711



**Nick Lord**  
03 5222 4711



Ground Floor



Site Plan