

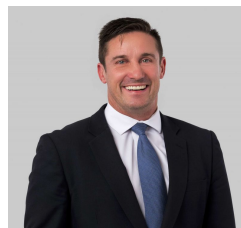


40 Bellerine Street Geelong VIC

5 🚗

- * Approx. 390m2 professional suites over 2 levels
- * Neighbouring medical precinct and a short stroll to CBD
- * Extremely well presented with reception, open plan space, individual offices, kitchen, amenities and flexible workshop area
- * 5 secure carparks
- * Activity Centre 1 zone

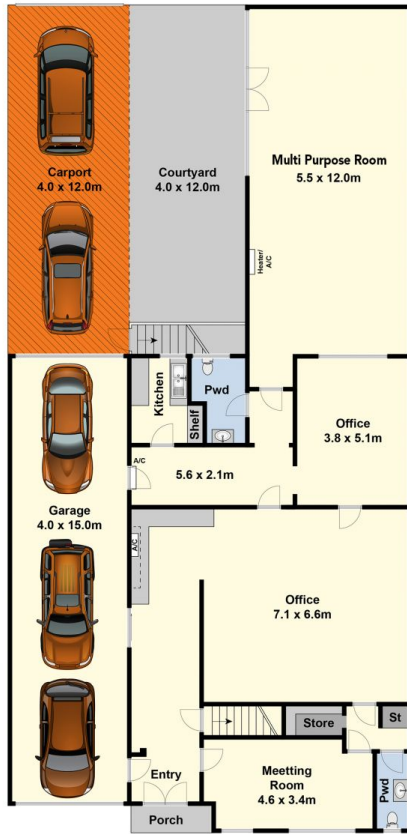
Type : Offices
Building Size : 390 sqm
View : <https://www.maxwellcollins.com.au/lease/vic/geelong-district/geelong/commercial/offices/7960180>



Paul Whyte
03 5222 4711



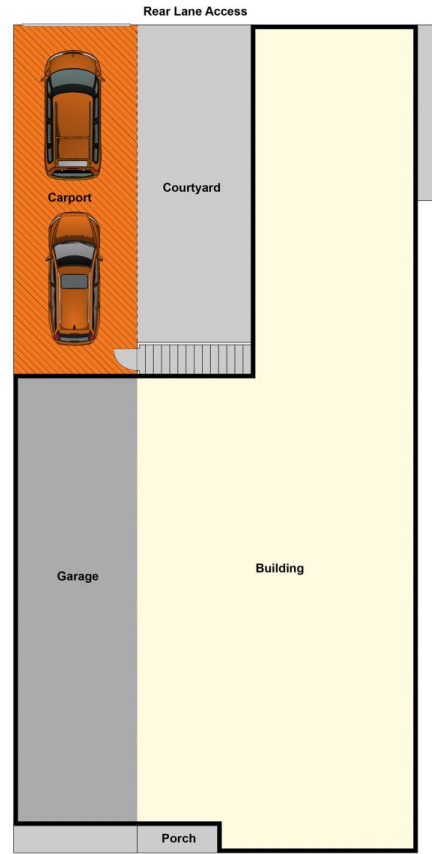
Matthew Curnow
5222 4711



Ground Floor



First Floor



Site Plan

