



35 Finchaven Street Herne Hill VIC

3 1 2

Set amongst established surrounds in one of Herne Hill's most tightly held pockets is this well-loved character home on 690m2 approx. and represents a boundless opportunity and potential for families, tradies, investors or those who work from home. Tastefully updated with a warm homely feel the home offers 3 good sized bedrooms all with built in robes and a light filled lounge that flows to the central dining and large kitchen. Outside is an impressive alfresco area at the rear which is ideal for entertaining when friends and family come over and the big backyard allows for plenty of room for children and pets to play. The garaging is a true highlight with accommodation for two cars, a home office and a salon. Conveniently located close to schools, parks, sporting reserves, Minerva Road shops and easy access to CBD & the Geelong Ring Road. This outstanding opportunity is one not to be missed.

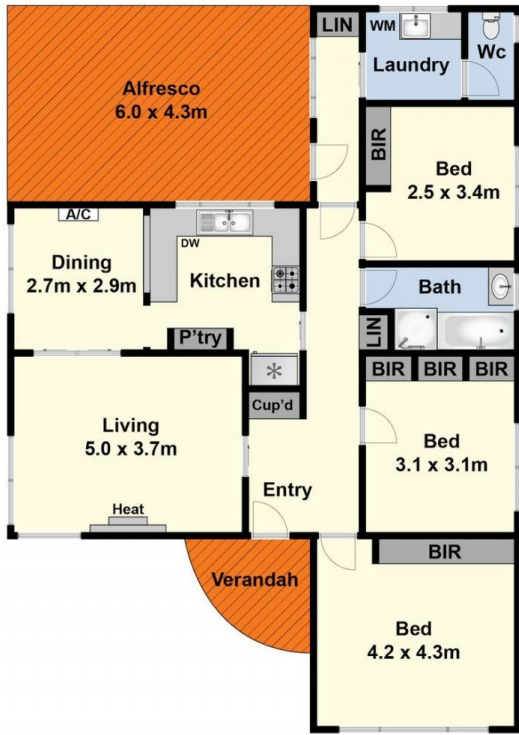
Price : \$935,000 - \$985,000
Land Size : 690 sqm
View : <https://www.maxwellcollins.com.au/sale/vic/geelong-district/herne-hill/residential/house/7960050>



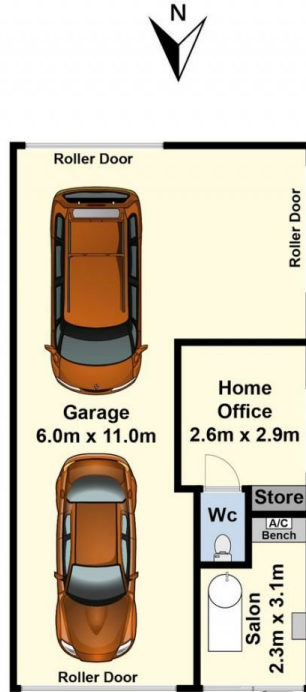
Duncan Skene
03 5222 4711



Laura Vander Noord
03 5222 4711



Ground Floor



(Not In Position)



Site Plan