



6/18 Hereford Drive Belmont VIC

2 1 1

Soaring raked ceilings give this fabulous townhouse a great sense of light and space. Uniquely styled the home boasts an open plan kitchen, dining and living areas. The two bedrooms both have BIR's, high ceilings and the central bathroom has under tile floor heating, shower, vanity and a separate toilet. The home is kept comfortable via split system air conditioning for heating and cooling. With its own frontage, two courtyards, an oversized single garage at the rear with an extra workshop area this is indeed something special. Waurm Ponds shopping centre is easily reached from here as is Leisurelink Aquatic & Recreation Centre and the Waurm Ponds Library plus green spaces such as the Waurm Ponds Valley Parklands, Winter Reserve and the ring road. What a terrific opportunity to live a low maintenance lifestyle., especially for first home buyers and investors.

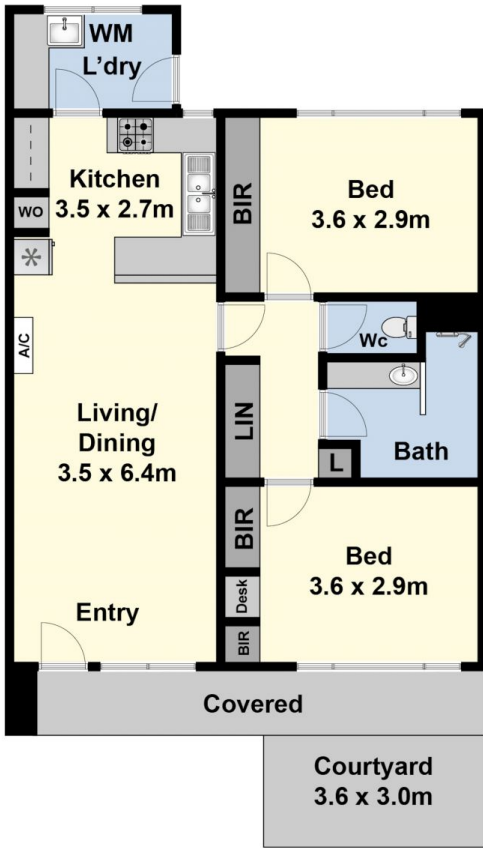
View : <https://www.maxwellcollins.com.au/sale/vic/geelong-district/belmont/residential/unit/7944959>



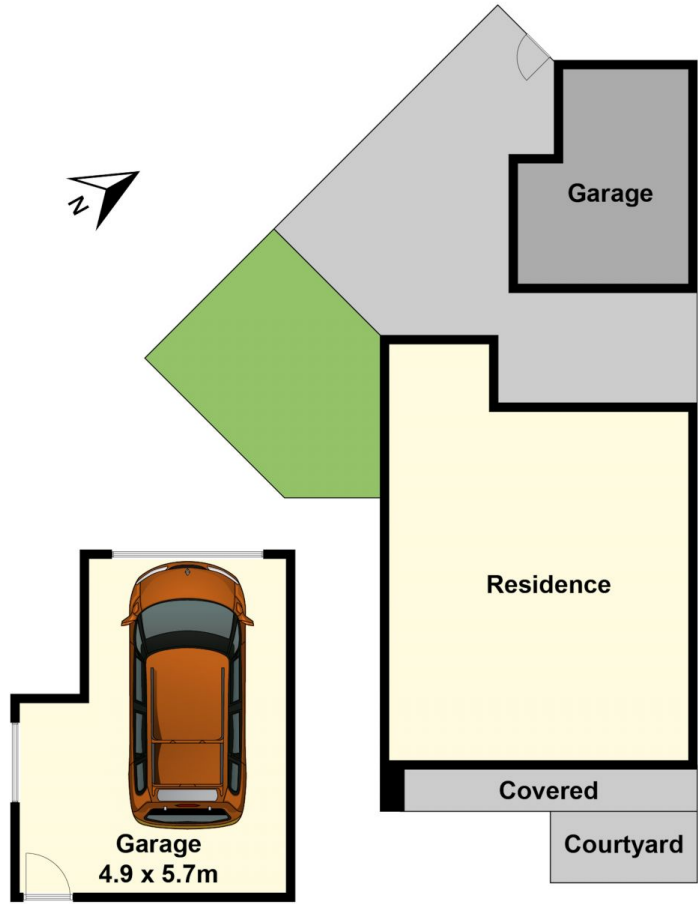
Duncan Skene
03 5222 4711



Laura Vander Noord
03 5222 4711



Ground Floor



(Not In Position)

Site Plan