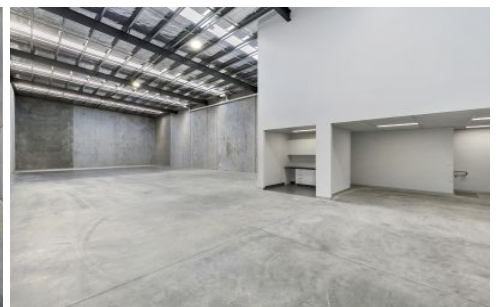




DISCLAIMER: This drawing is indicative only & all measurements are approximate.



11/8 Lewalan Street Grovedale VIC

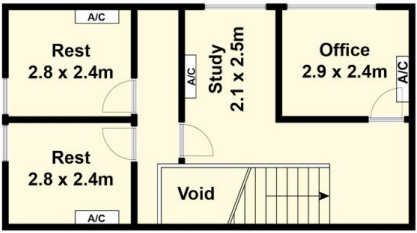
- * Long term lease to Ambulance Victoria
- * Approx. 350m² 'as new' high span warehouse
- * Reception, kitchen, amenities, mezzanine office, polished concrete floors
- * Over \$350,000 fit out by tenant
- * Set and forget
- * Zoned industrial 1

Note - internal photographs taken prior to fit out

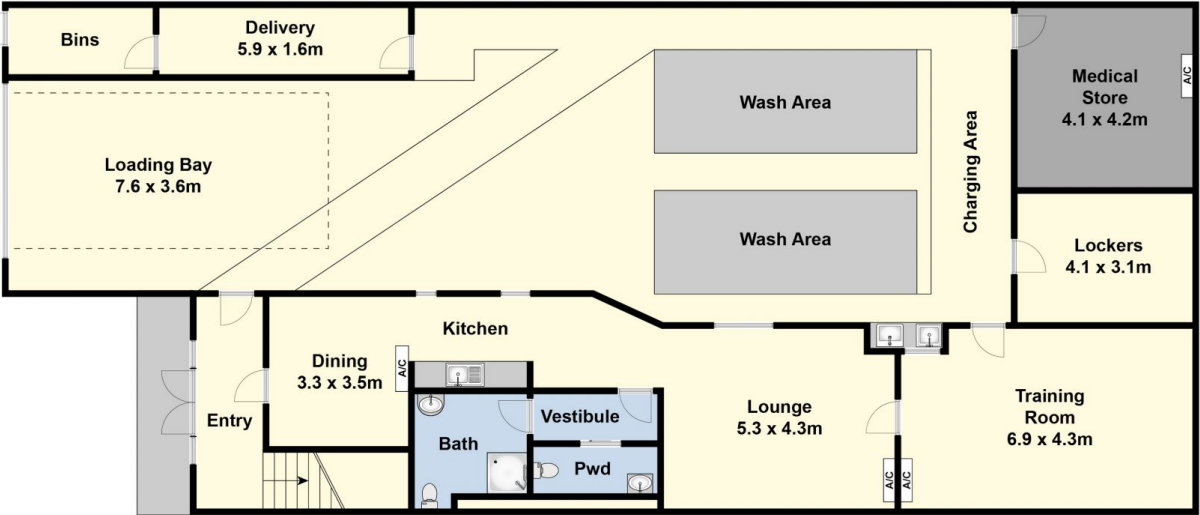
Type : Industrial
Building Size : 350 sqm
View : <https://www.maxwellcollins.com.au/sale/vic/geelong-district/grovedale/commercial/industrial/7910050>



Paul Whyte
03 5222 4711



Mezzanine Level



Ground Floor