



2/11-13 Fontaine Street Grovedale VIC

2 1 1

Located close to the Waurm Ponds shopping centre, Mandama primary school, and sporting reserve is this delightful 2 bedroom unit which is perfect for downsizing, first home buyers or investors.

The immaculately presented unit features spacious open plan lounge with gas heater, dining area with split AC, gas upright oven, secluded outdoor garden and entertaining, side fernery and shed plus a lock up garage.

This could be the one you have been waiting for.

Type : Unit

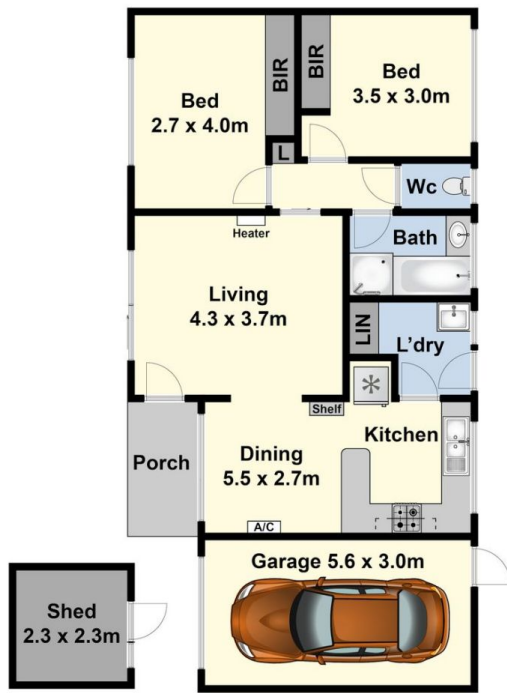
View : <https://www.maxwellcollins.com.au/sale/vic/geelong-district/grovedale/residential/unit/7909422>



Eugene Carroll
03 5222 4711

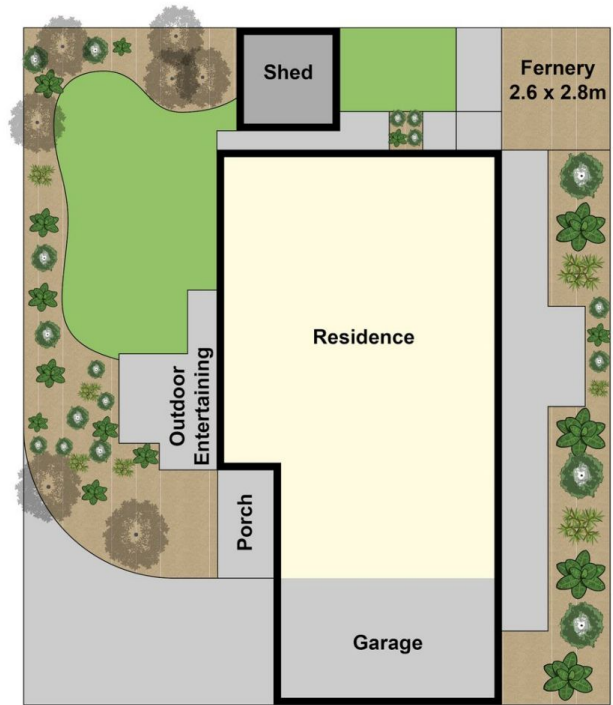


Shaun Carroll
03 5222 4711



(Not In Position)

Ground Floor



Site Plan