



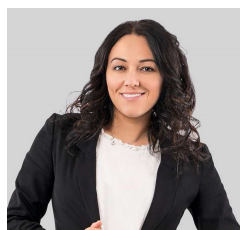
33-35 Annmaree Drive Indented Head VIC

The idyllic sea-side hamlet of Indented Head is truly a place for all to enjoy. Best known for its quiet nature, picturesque setting & long stretches of sandy beaches, Indented Head truly is one of the Bellarine Peninsula's best kept secrets.

Your opportunity to be a part of this amazing coastal town is now here with this ideal block of land comprising of 426m², set amongst established coastal houses in a quiet cul-de-sac & boasting only a short distance to the beautiful beach front. This ideal corner allotment also offers the opportunity to add side gates for safe and secure parking for the caravan, boat or jet-ski - a staple of the coastal lifestyle!

[For full version visit the website](https://www.maxwellcollins.com.au)

Type : Land
Price : \$360,000 - \$380,000
Land Size : 426 sqm
View : <https://www.maxwellcollins.com.au/sale/vic/geelong-district/indented-head/residential/land/7906333>



Ange Heskett
03 5222 4711