



333 Moorabool Street Geelong VIC

3 1 2

This red brick character home is located on the fringe of the city and is close to the South Geelong train station, Kardinia Park, Primary school and has direct access to Geelong's wonderful waterfront.

Features include spacious lounge with leadlight windows, new carpet, updated bathroom, 3 good sized bedrooms, freshly painted, ducted heating, split A/C, secure garden with shed, outdoor entertaining plus rear access to a double garage.

The 576m2 block is on two titles with potential for further development (STCA). This is a great opportunity to purchase a home in a prime location.

Land Size : 576 sqm
View : <https://www.maxwellcollins.com.au/sale/vic/geelong-district/geelong/residential/house/7894432>



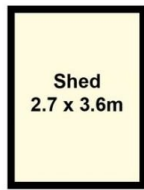
Eugene Carroll
03 5222 4711



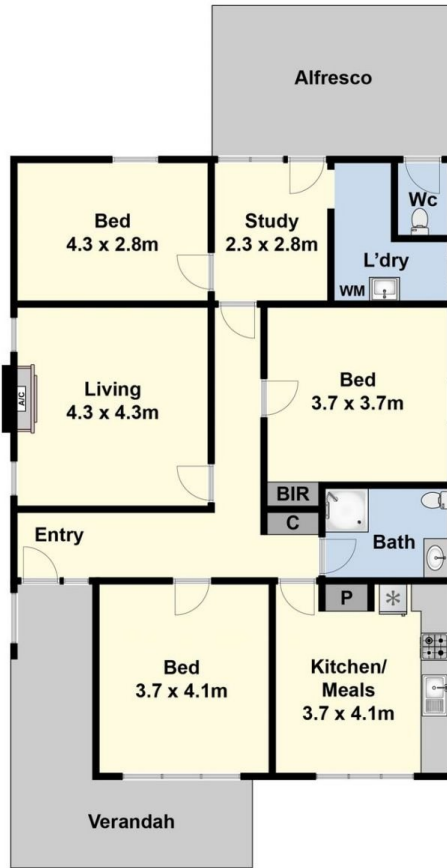
Shaun Carroll
03 5222 4711



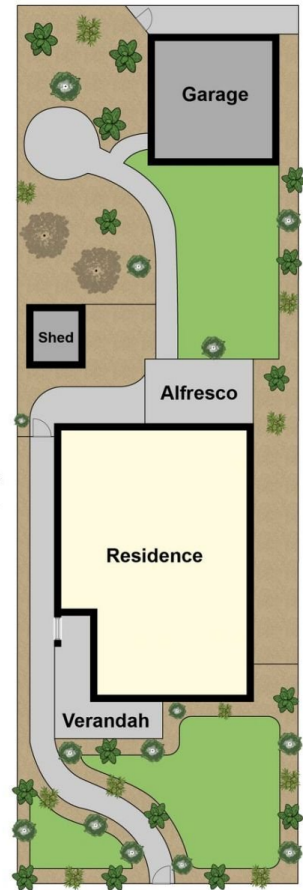
(Not In Position)



(Not In Position)



Ground Floor



Site Plan