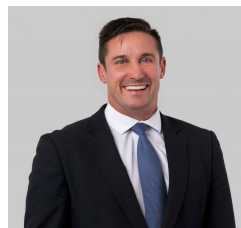




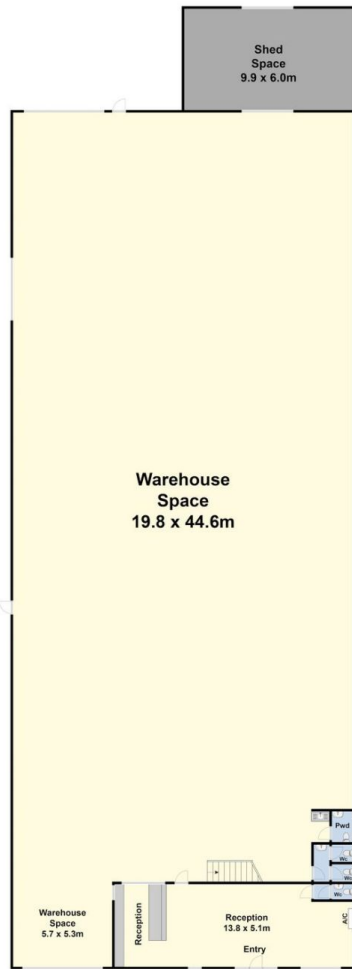
36 Leather Street Breakwater VIC

- * Warehouse of approx 1,000m² on over approx 4,000m² of land
- * Offices/showroom/reception
- * Upstairs office and lunchroom
- * High span, front and rear roller doors plus side roller door
- * Side access to rear yard
- * 12 car spaces on site
- * Amenities
- * Zoned Industrial 1

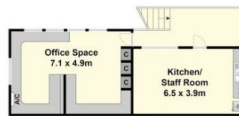
Type : Industrial
Building Size : 1000 sqm
Land Size : 4000 sqm
View : <https://www.maxwellcollins.com.au/lease/vic/geelong-district/breakwater/commercial/industrial/7820302>



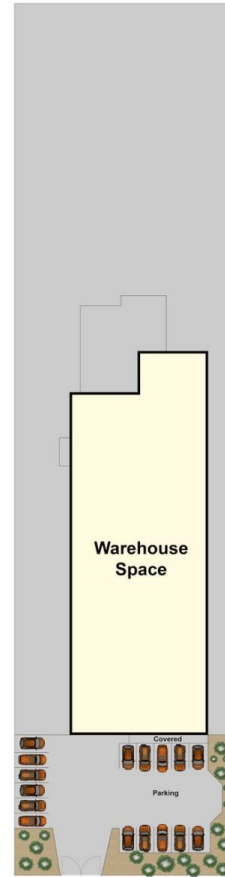
Paul Whyte
03 5222 4711



Ground Level



Level One



Site Plan