



## 13 Grove Road Marshall VIC

3 2 2

Hidden amongst its established gardens is this neatly presented home situated in the highly sought-after suburb of Marshall; close to the station and is ideal for first-time home buyers, Melbourne commuters and investors. Featuring a fully equipped kitchen with open plan meals area, a light filled spacious living area, main bedroom with WIR and ensuite, a further two bedrooms both with built in robes and a central bathroom. Outside features a low maintenance garden and a double lock up garage with internal access. Located only a short walk to the train station, schools, shops and easy access to Geelong CBD and Bellarine Peninsula.

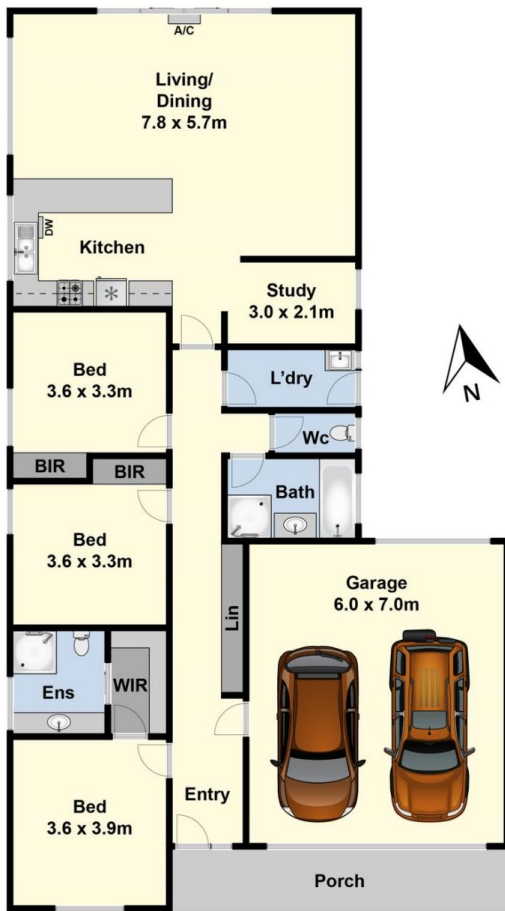
**Type** : House  
**Land Size** : 450 sqm  
**View** : <https://www.maxwellcollins.com.au/sale/vic/geelong-district/marshall/residential/house/7813619>



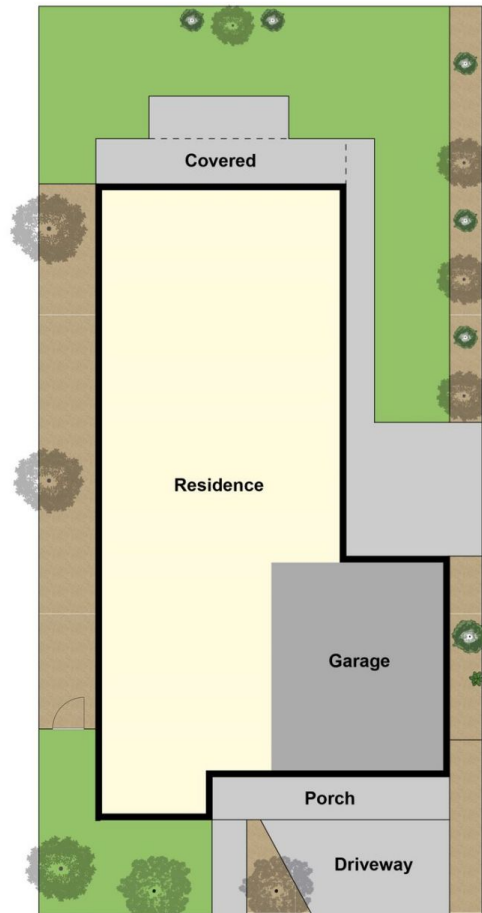
**Duncan Skene**  
03 5222 4711



**Laura Vander Noord**  
03 5222 4711



Ground Floor



Site Plan