



1 Conrad Court Whittington VIC

3  1  1 

Attention first home buyers, investors and downsizers! Situated on 419sqm of land, this entry level home boasts the perfect opportunity to secure a low maintenance three-bedroom home. Having recently received a cosmetic update, with a fresh coat of paint and newly laid carpets, the home is ready for you to move in and enjoy.

Featuring a large front lounge room with large windows letting in plenty of natural light, three bedrooms, two of which include built-in robes, a large kitchen with gas upright oven and an adjacent meals area, a bathroom with shower, bath and separate toilet. Outside features a single carport, low maintenance gardens and a private paved courtyard, with a grassed area that is ideal for pets.

Within walking distance of Whittington Primary School, local daycare centre and public transport plus only a short

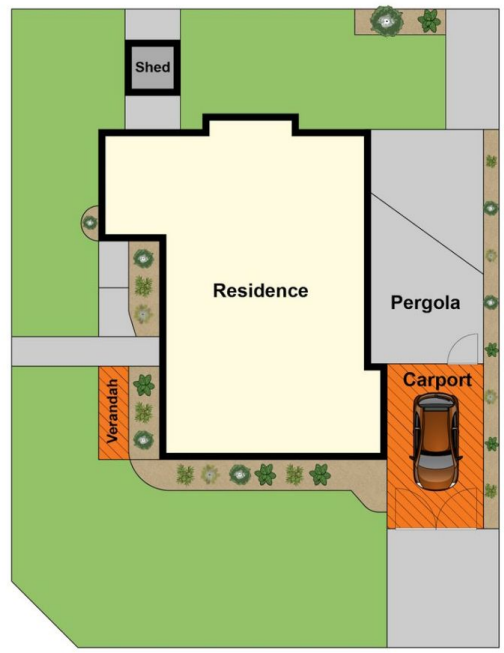
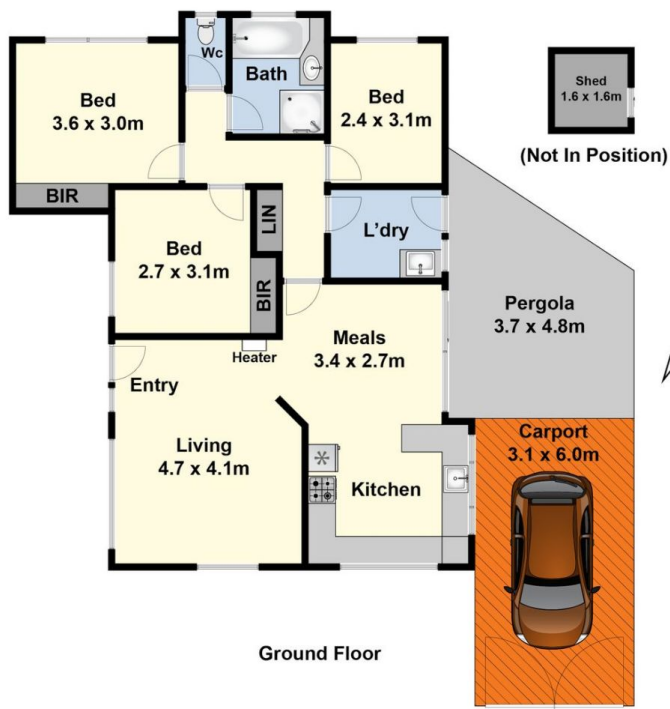
Price : \$ 398,000
Land Size : 419 sqm
View : <https://www.maxwellcollins.com.au/sale/vic/geelong-district/whittington/residential/house/7797361>



Shaun Carroll
03 5222 4711



Eugene Carroll
03 5222 4711



Site Plan