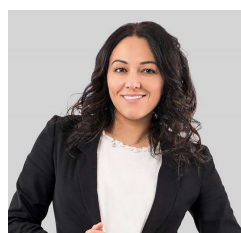




## 36B Cambra Road Belmont VIC

Get in quick and be the lucky person to snap up this last remaining block. This lot is separately titled, is approx. 325m<sup>2</sup> and boast North facing rear yard. Perfectly located within walking distance to High Street shops, schools & public transport, as well as offering easy access to Surf Coast Highway for your commute into work. Whether you're looking to build your first home or looking to build your investment portfolio, this allotment offers the perfect blank canvas to make your dreams come true. \*Council approved plans available for viewing upon request.

**Price** : \$345,000 - \$365,000  
**Land Size** : 325 sqm  
**View** : <https://www.maxwellcollins.com.au/sale/vic/geelong-district/belmont/residential/land/7614624>



**Ange Heskett**  
03 5222 4711



**Simon Braybrook**  
03 5222 4711