

12 Libau Avenue Bell Park VIC

3 1 1

Just 600m from the Separation Street shops, North Geelong Secondary College as well as the Holy Family school and church this is a home that is sure to appeal to young families. Featuring impressive polished hardwood floors throughout, the home is warmed by a gas heater, as well as a reverse cycle air conditioner and has three generous bedrooms (two with built in robes), an updated kitchen with solid granite benchtops and adjoining meals area. Set on a generous allotment of approximately 632sqm the home adjoins parkland that provides even more space for children to play and room to exercise the family's dog, in addition to easy access to the shops and schools. With a wide street frontage there is plenty of room for extra vehicles in addition to the remote-controlled single garage. A great opportunity to purchase a sound family

Type : House
Price : \$ 620,000
Land Size : 633 sqm
View : <https://www.maxwellcollins.com.au/sale/vic/geelong-district/bell-park/residential/house/7603387>

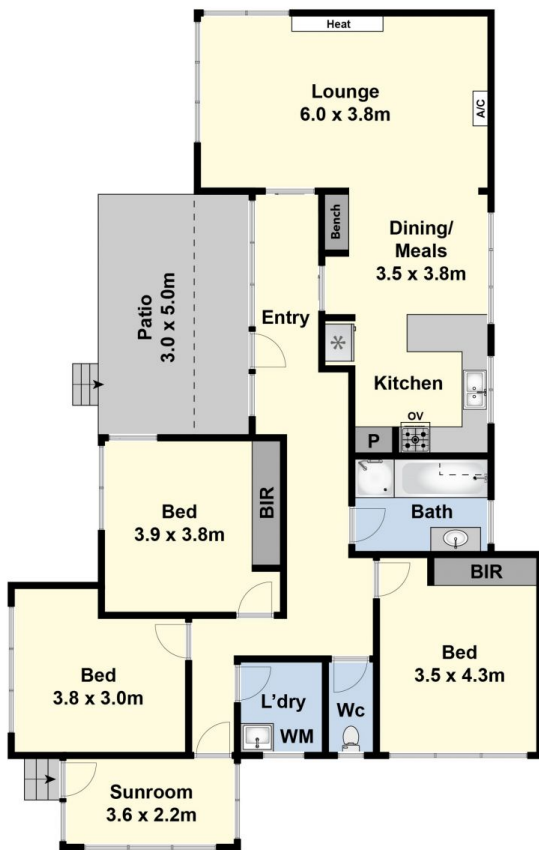


Lois Wilson
03 5222 4711

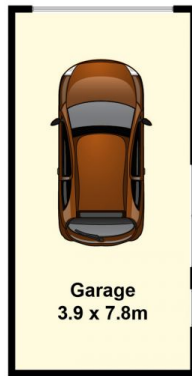


Simon Braybrook
03 5222 4711

[For full version visit the website](https://www.maxwellcollins.com.au)



Ground Floor



(Not In Position)



Site Plan