



## 52 Wendover Avenue Norlane VIC

2 1

This 2 bedroom home is set on a 650m<sup>2</sup> block with northerly aspect and is located close to the Melbourne Freeway and the Spirit of Tasmania ferry terminal. Currently tenanted, the home consists of a good sized lounge with gas heater plus gas cooking in the kitchen. Ideal future development site (S.T.C.A.)

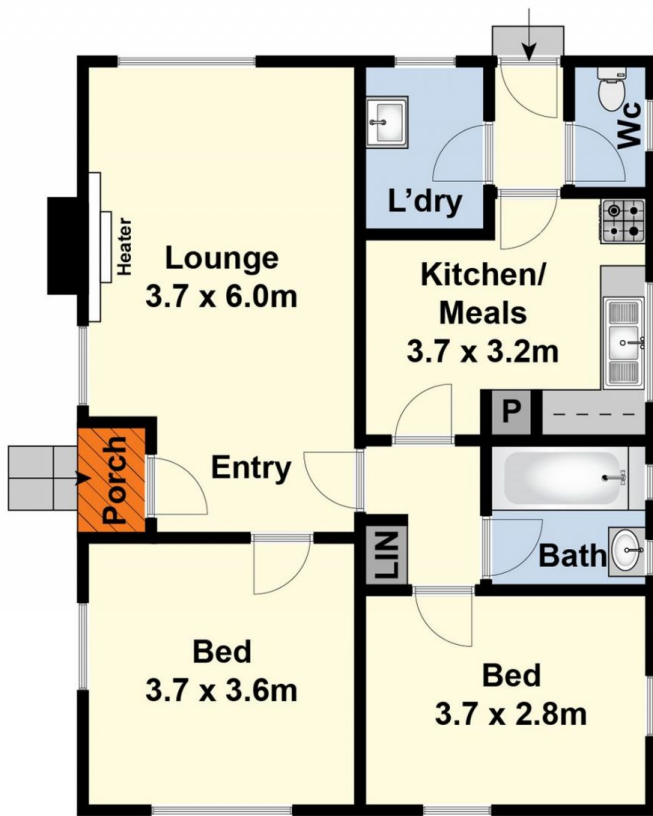
**Type** : House  
**Land Size** : 650 sqm  
**View** : <https://www.maxwellcollins.com.au/sale/vic/geelong-district/norlane/residential/house/7601625>



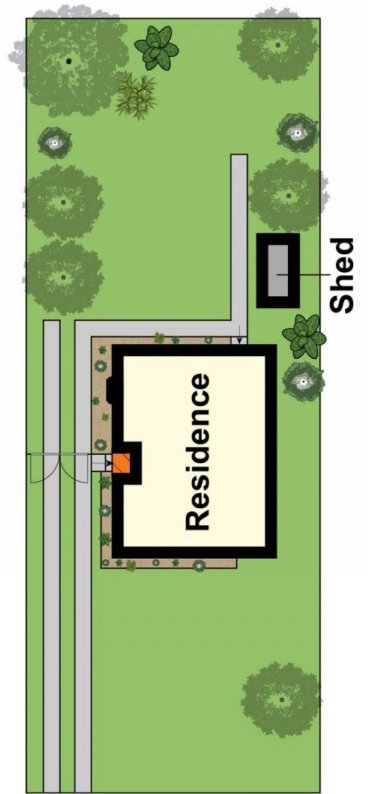
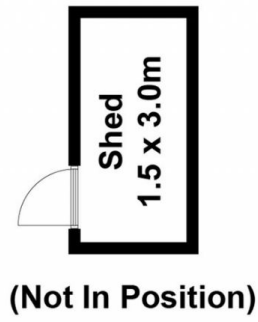
**Eugene Carroll**  
03 5222 4711



**Shaun Carroll**  
03 5222 4711



Ground Floor



Site Plan