



56 Armytage Street Winchelsea VIC

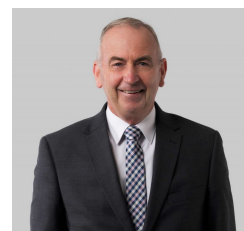
3 2 2

Set on an impressive 891sqm of land is this wonderfully presented country-style home that you will no doubt fall in love with. Situated in the sought-after Winchelsea township, the home has been beautifully renovated and boasts a functional floorplan with spacious rooms and is ideal for a growing family. There is nothing more to do than simply move in and enjoy! The home features a wraparound verandah, a large and light-filled open plan living space with a cosy wood-fire heater, floating timber floors flow throughout the home, an updated kitchen with stone benchtops, electric cook-top, dishwasher, breakfast bar and adjacent meals area. A main bedroom with walk-in robe and ensuite, while two further bedrooms with built-in robes are serviced by a family bathroom with shower and bath. Two split system air-conditioners, a wood fire heater

Type : House
Price : \$ 650,000
Land Size : 891 sqm
View : <https://www.maxwellcollins.com.au/sale/vic/great-ocean-rd-otway-ranges/winchelsea/residential/house/7582428>

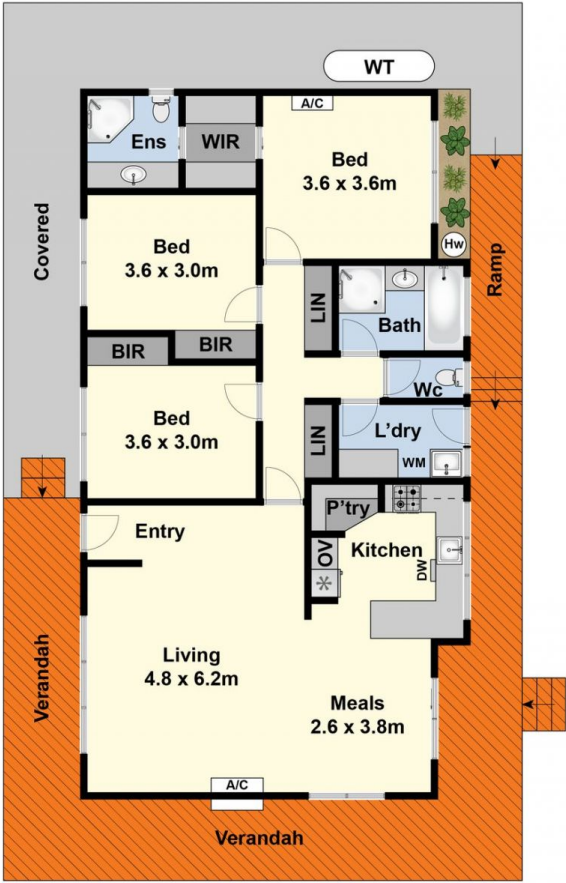


Shaun Carroll
03 5222 4711

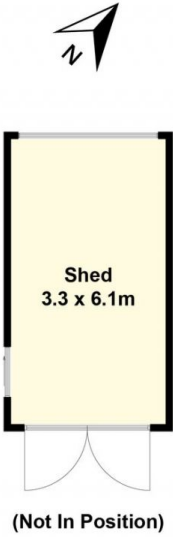


Eugene Carroll
03 5222 4711

[For full version visit the website](https://www.maxwellcollins.com.au)



Ground Floor



Site Plan