



10 Eldine Court Grovedale VIC

3 2 1

Set on a large corner block and close to schools, shops, Burdoo Reserve and the train station is this affordable 3 bedroom home. Ideal for a first home buyer or investor and is ready to renovate and reap the rewards. Features include, spacious open plan living with split air conditioner, hardwood floors, kitchen, meals, main bedroom with ensuite and walk-in robe, large side yard, which is perfect for a caravan or trailer. Currently let to a long term tenant.

Type : House

Price : \$ 570,000

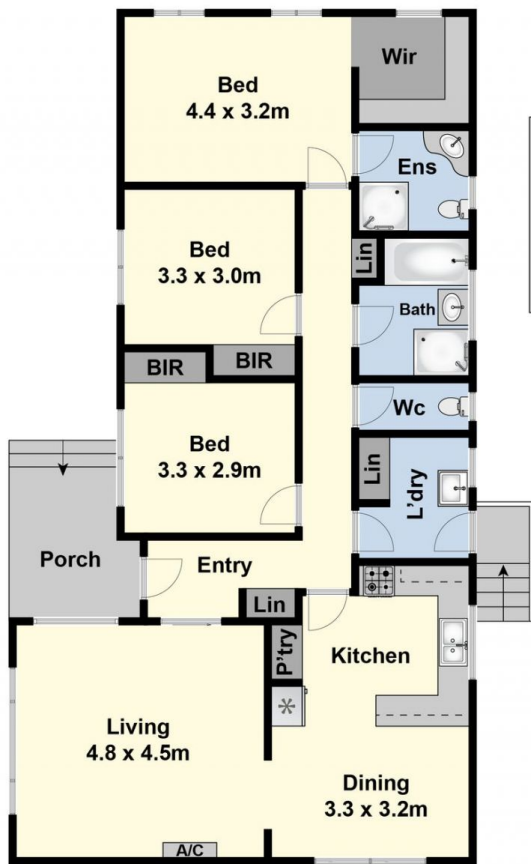
View : <https://www.maxwellcollins.com.au/sale/vic/geelong-district/grovedale/residential/house/7558561>



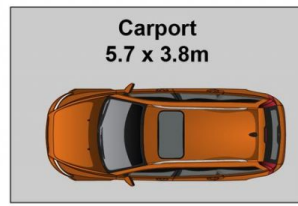
Eugene Carroll
03 5222 4711



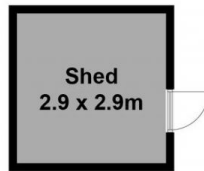
Shaun Carroll
03 5222 4711



Ground Floor



(Not In Position)



(Not In Position)



Site Plan