



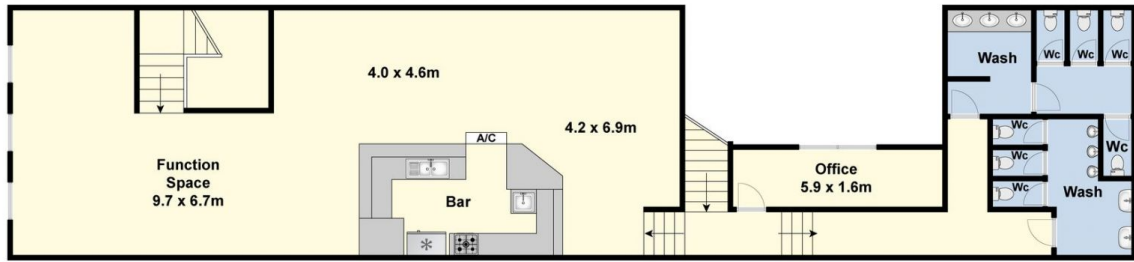
## 48 Moorabool Street Geelong VIC

- \* Upstairs & downstairs dining/function rooms
- \* Fully fitted out kitchen and bars
- \* Heating and cooling throughout
- \* Rear lane access
- \* Upstairs areas 18.5 x 7m = 130m2 plus office & amenities
- \* Ground floor 28 x 7m = 220m2 approx.
- \* Total building area 390m2 approx.

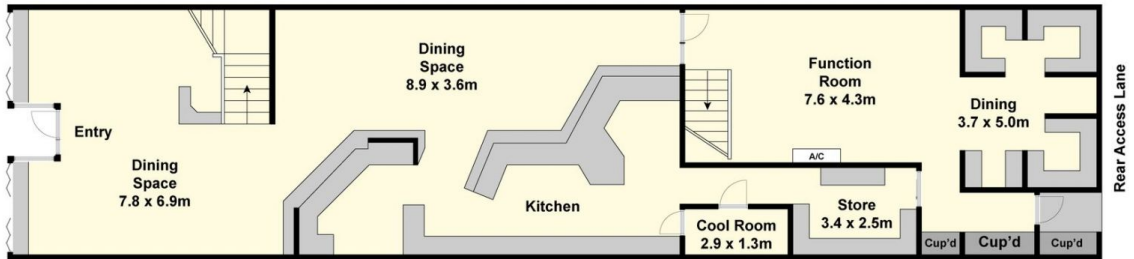
**Type** : Retail  
**Building Size** : 390 sqm  
**View** : <https://www.maxwellcollins.com.au/lease/vic/geelong-district/geelong/commercial/retail/7505436>



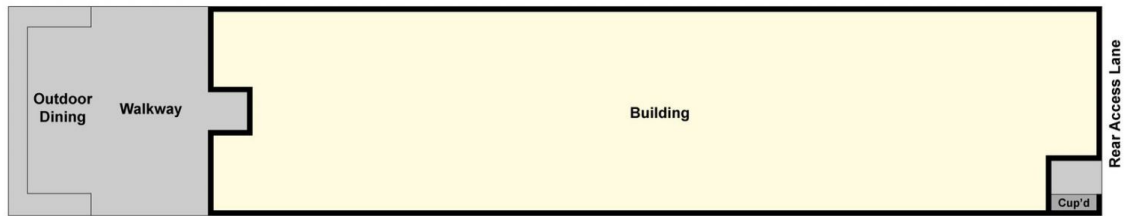
**Paul Whyte**  
03 5222 4711



First Floor



Ground Floor



Site Plan