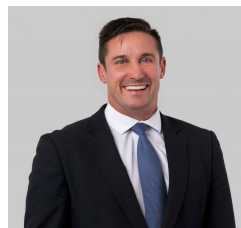




Part Level/10 Moorabool Street Geelong VIC

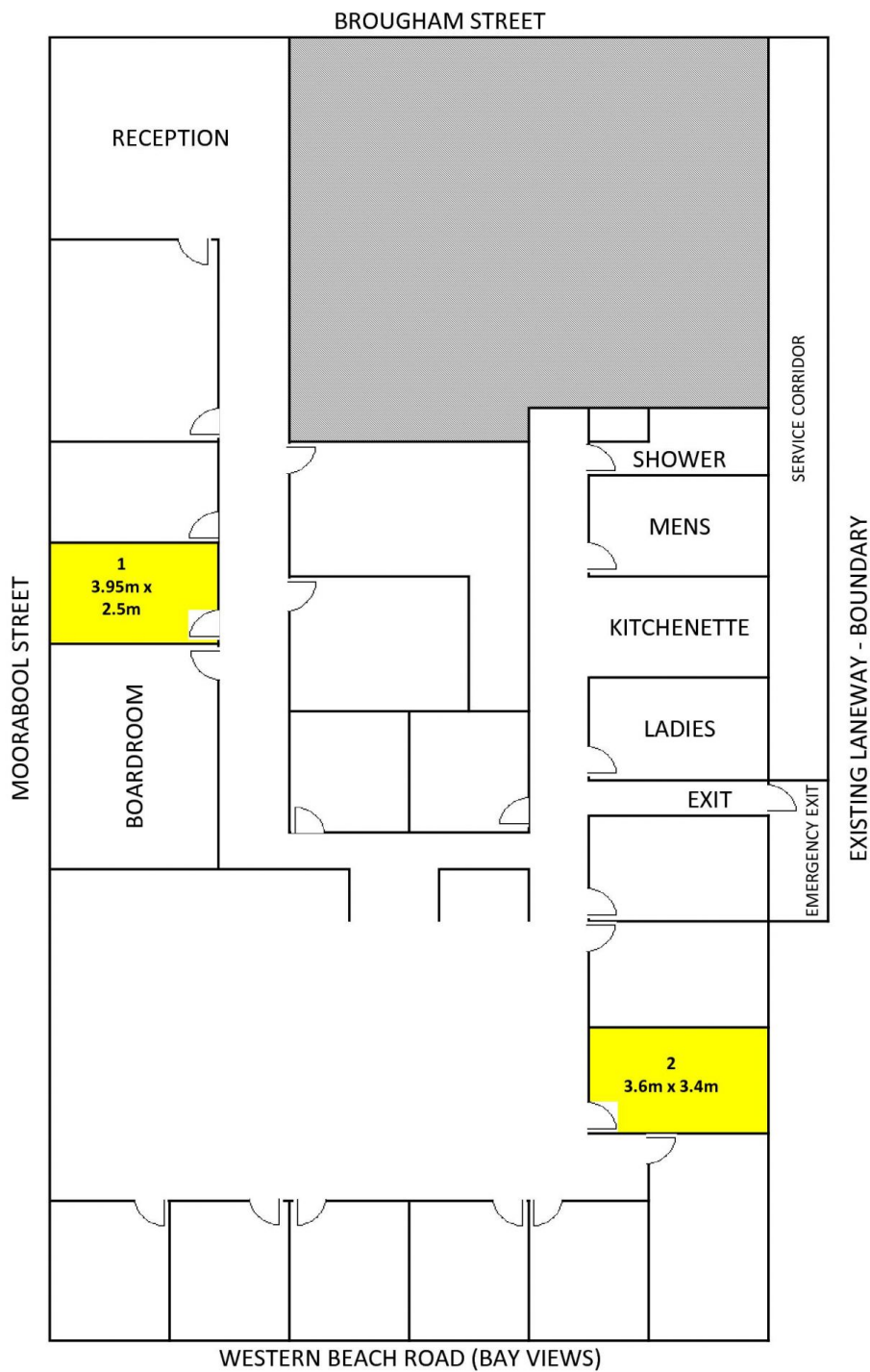
- * Reception and mail services included in rent
- * 24 hour access plus access to boardroom and amenities
- * Office 1 - 9.87m2 approx - West wall, no window
- * Office 2 - 12.24m2 approx - West wall, with window (no views)
- * Outgoings included in rent
- * Zoned Activity Centre 1

Type : Offices
Price : From \$8,000pa + GST
Building Size : 12.24 sqm
View : <https://www.maxwellcollins.com.au/lease/vic/geelong-district/geelong/commercial/offices/7471500>



Paul Whyte
03 5222 4711

MACMILLAN COWAN & CO - OFFICE PLAN



- 1. \$ 8,000.00 + GST p/a (Internal - no windows)
- 2. \$ 10,500.00 + GST p/a (West Wall - window but no views)