

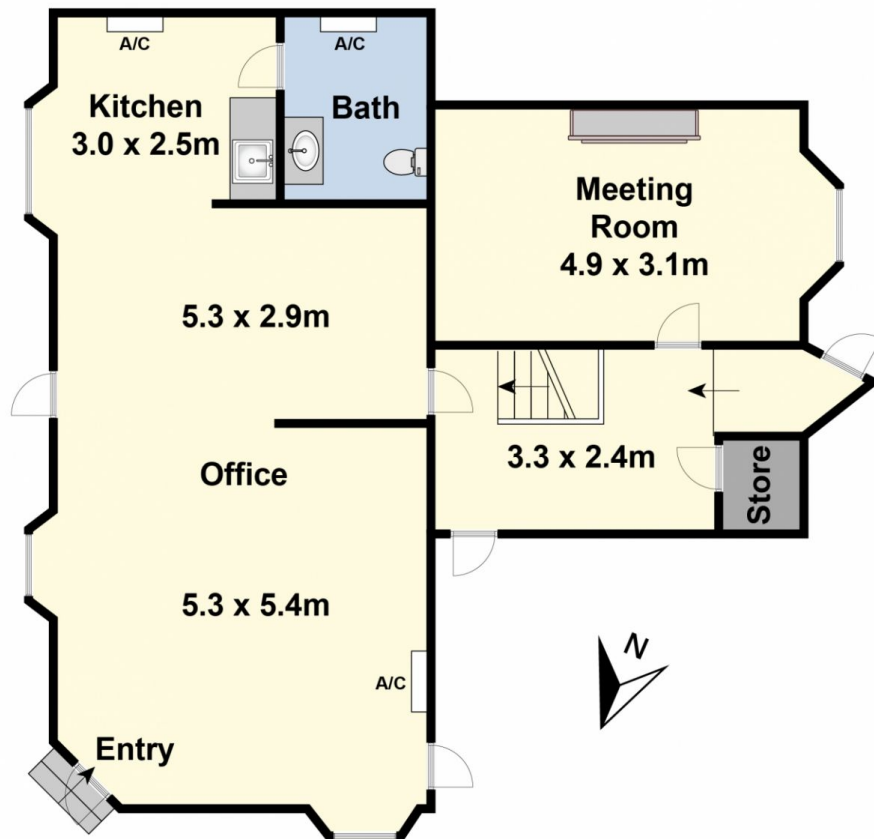
Suite/1/2 Mercer Street Geelong VIC

- * Beautifully presented professional rooms/offices of approx 85m².
- * Exposure to busy Mercer Street
- * Close proximity to Geelong Railway Station and Waterfront
- * Zoned Activity Centre 1
- * Available mid December 2022.

Type : Offices
Building Size : 85 sqm
View : <https://www.maxwellcollins.com.au/lease/vic/geelong-district/geelong/commercial/offices/7471495>



Paul Whyte
03 5222 4711



Ground Floor