



15 Albert Terrace Belmont VIC

4 2 2

Located a short stroll to the Barwon River, the iconic 'Round House' presents an exclusive opportunity to secure an architectural masterpiece.

Built in the early 1960s, the home showcases a masterful union of brutalist art-deco and mid-century modern design. You'll love that stunning updates over the years pay tribute to the home's original features, blending seamlessly to create an eclectic family abode. The layout establishes a sense of flow and connectivity, with the mature gardens providing a tranquil outlook through every window.

There's no doubt that this residence is a true haven for artists and creatives. The library makes a dramatic statement with floor-to-ceiling bookcases, while north-eastern light filters through the art studio. The music room offers immense versatility as a sewing room or even

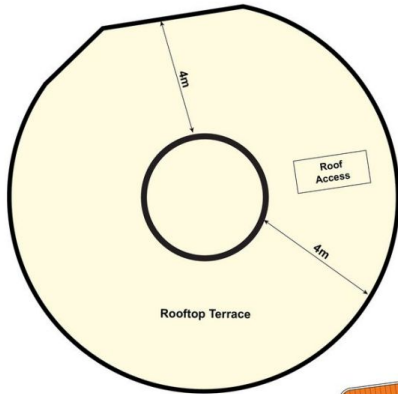
Land Size : 730 sqm
View : <https://www.maxwellcollins.com.au/sale/vic/geelong-district/belmont/residential/house/7465014>



Duncan Skene
03 5222 4711



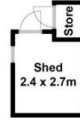
Laura Vander Noord
03 5222 4711



Rooftop Terrace



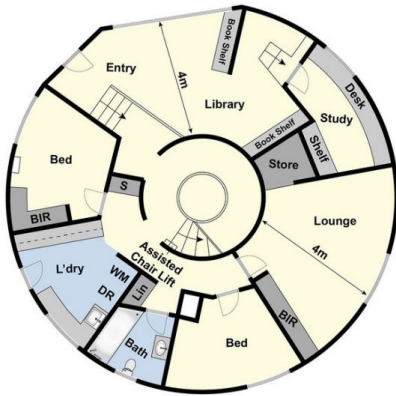
(Not In Position)



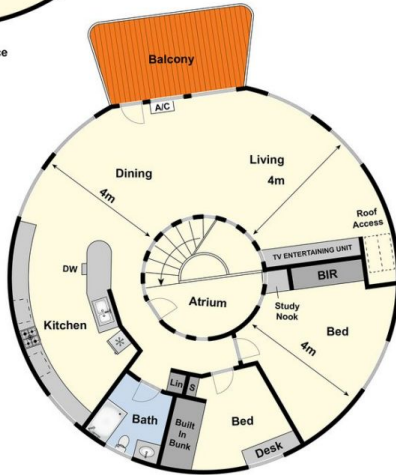
(Not In Position)



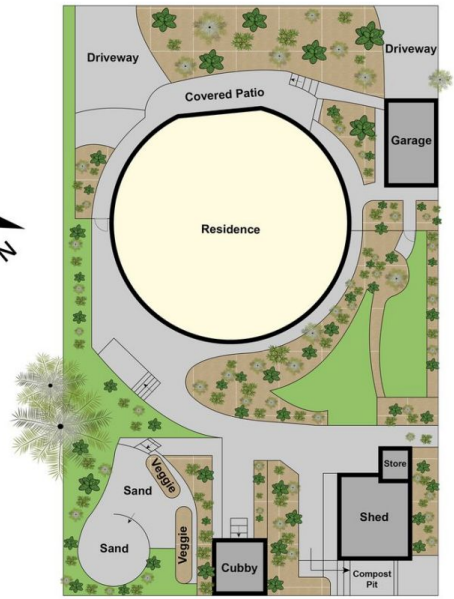
(Not In Position)



Ground Floor



Upper Floor



Site Plan