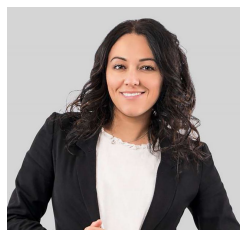




## 24 Yellow Gum Way Mount Duneed VIC

This perfectly positioned 400sqm block with a 12.5 meter frontage, is already titled and ready to go. The highly sought after Yaringa Estate offers and unbeatable lifestyle, with easy access to Armstrong Creek Town Centre, Geelong's CDB, Torquay Beach & The Ring Road. You'll also find Deakin university, The Epworth Hospital and Waurn Ponds train station only a stones throw away. This block offered endless options for you to build your new home, so don't miss this opportunity!

**Type** : Land  
**Land Size** : 400 sqm  
**View** : <https://www.maxwellcollins.com.au/sale/vic/geelong-district/mount-duneed/residential/land/7457398>



**Ange Heskett**  
 03 5222 4711