



**8/220-222 Wilsons Road Whittington VIC**

**2** **1** **1**

Ideally located moments from the heart of thriving Bellarine Village & Newcomb Central, this quality 2 bedroom abode will appeal to astute first home buyers, downsizers and investors seeking a low maintenance lifestyle both inside and out, and advantages with blue chip credentials. In a neatly maintained block, this spacious retreat provides 2 bedrooms (BIRs), a central kitchen and a lovely living space with easy access to the sunny and private courtyard. Boasting a good sized bathroom and separate laundry the property also has easy access to the carport.

**Type** : Unit  
**Price** : \$ 315,000  
**View** : <https://www.maxwellcollins.com.au/sale/vic/geelong-district/whittington/residential/unit/7457390>

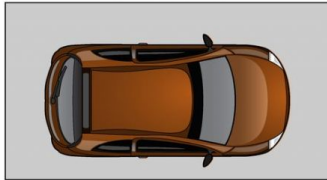


**Duncan Skene**  
**03 5222 4711**

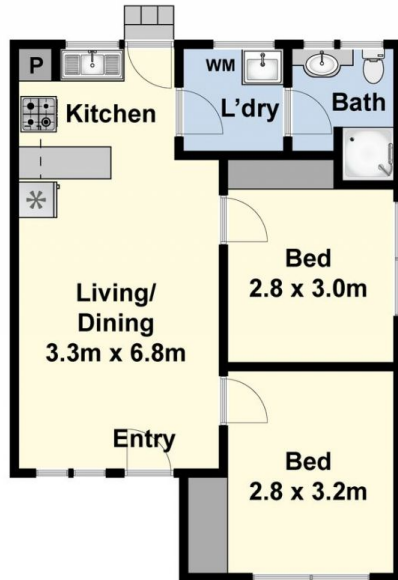


**Laura Vander Noord**  
**03 5222 4711**

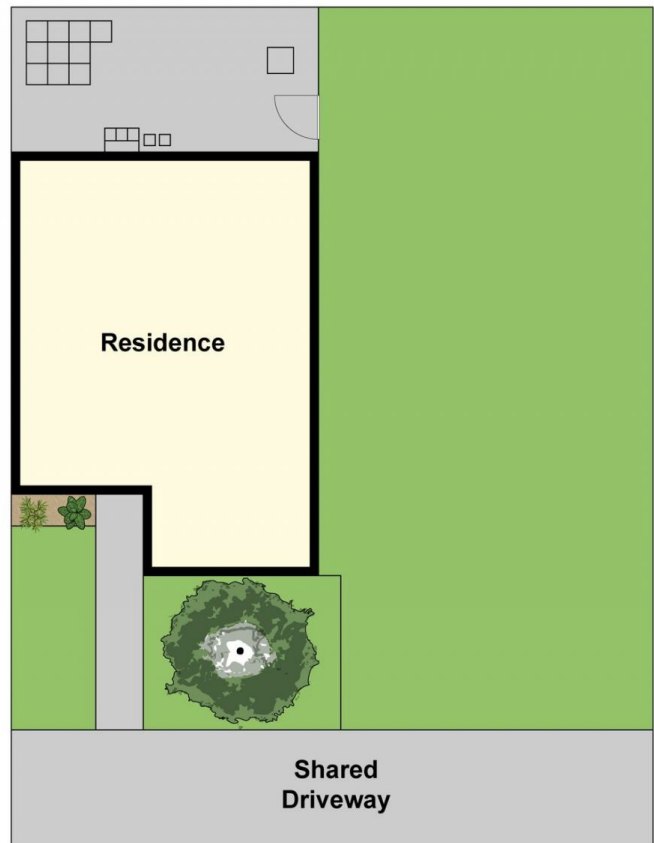
Carport  
5.5 x 3.0m



(Not In Place)



Ground Floor



Site Plan