



1A Carbery Court Grovedale VIC

2 1 1

Boasting a wide street frontage, this original single level brick unit presents a thrilling entry to a central family neighbourhood, within close proximity to all your lifestyle needs. Framed by a manicured front lawn and low maintenance established gardens, the home opens onto a spacious living room with split system, adjacent to a generous kitchen with ample storage and space for dining. Two good sized bedrooms are each equipped with built-in wardrobes. The central bathroom includes a separate shower & bath, and a separate W/C. there is also a separate laundry with plenty of space. At the rear, the private courtyard includes a leafy boarder, while the home also includes a single lock-up garage with internal access, and space for additional off-street parking. Conveniently located close by to multiple primary schools, Waurn Ponds

Type : Unit

Price : \$ 490,000

View : <https://www.maxwellcollins.com.au/sale/vic/geelong-district/grovedale/residential/unit/7457377>

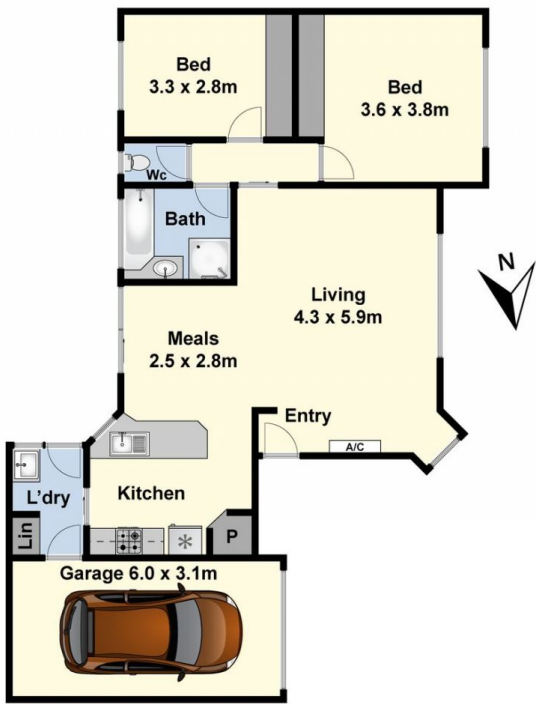


Laura Vander Noord
03 5222 4711

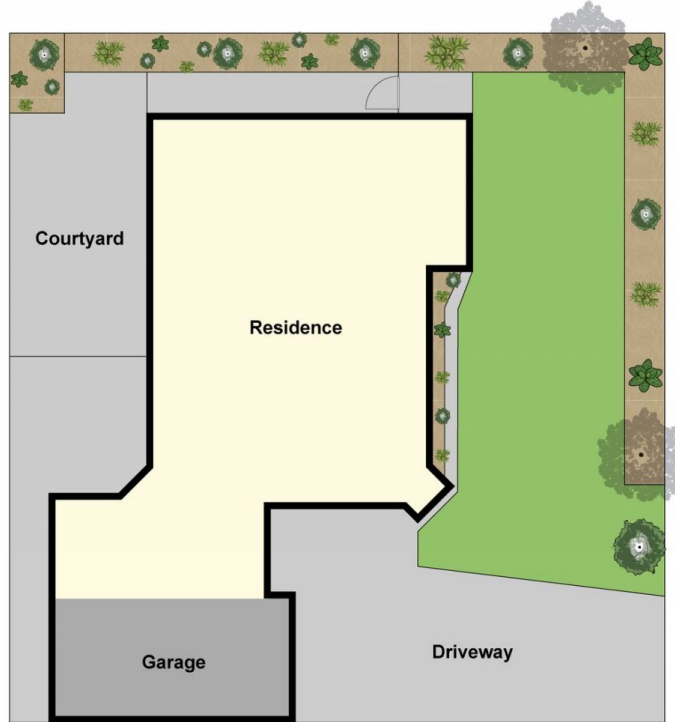


Duncan Skene
03 5222 4711

[For full version visit the website](https://www.maxwellcollins.com.au)



Ground Floor



Site Plan