



12 Canowindra Place Grovedale VIC

3 2 2

Located in the fantastic Grovedale neighbourhood with amenities just moments from your door this beautifully presented family home awaits you. With a generous parcel of land (658m2 approx), this appealing home is ideal for those looking for a place to call their own. There are three spacious bedrooms all with built-in robes. The master boasts an ensuite and a lovely sunny outlook over the private rear yard. The kitchen overlooks the covered alfresco area for outdoor entertaining and the manicured garden that attracts beautiful bird life. The dining and lounge area adjoin the kitchen and are kept comfortable all year round with the split system. The added bonus of a an oversized double lock up garage with remote door (10 x 6.8 approx) is sure to impress. Conveniently located close by to multiple primary schools, Waurin Ponds Shopping

Type : House
Price : \$ 645,000
Land Size : 658 sqm
View : <https://www.maxwellcollins.com.au/sale/vic/geelong-district/grovedale/residential/house/7457376>

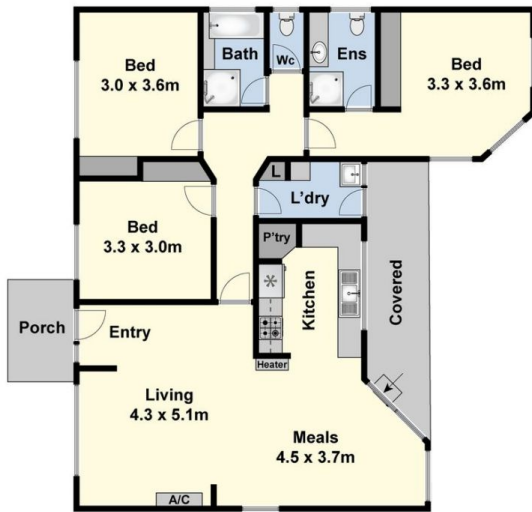


Laura Vander Noord
03 5222 4711

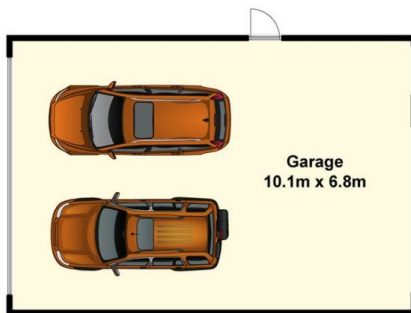


Duncan Skene
03 5222 4711

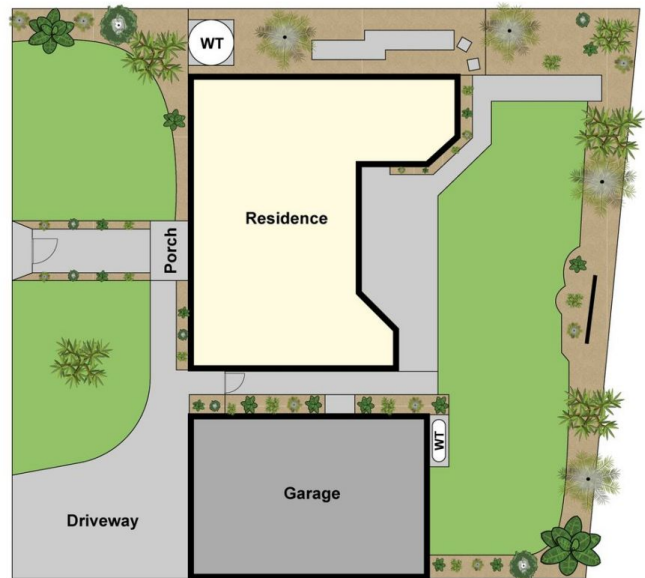
[For full version visit the website](https://www.maxwellcollins.com.au)



Ground Floor



(Not In Position)



Site Plan