



2/5 Emiliya Court Marshall VIC

2 1 1

An absolute delight from the moment you step inside with the contemporary tones, large open space and neutral wall colours and brand-new carpet throughout. This stylish property on its own title is a great opportunity for a first home buyer, downsizer or investor looking for something with spacious entertaining area and low maintenance. The home comprises of 2 generous bedrooms both with built in robes, main bathroom with shower & bath and single garage with internal entry & remote access. The living areas are drenched in warm sun all open plan and flow perfectly to the outdoor entertaining space and is all north facing. The well positioned kitchen is great for family dinners with large benches, breakfast bar, stainless steel gas cooktop, electric oven, range hood and dishwasher. Other feature include a split system in the living room and a

Type : Unit

Price : \$ 510,000

View : <https://www.maxwellcollins.com.au/sale/vic/geelong-district/marshall/residential/unit/7457371>

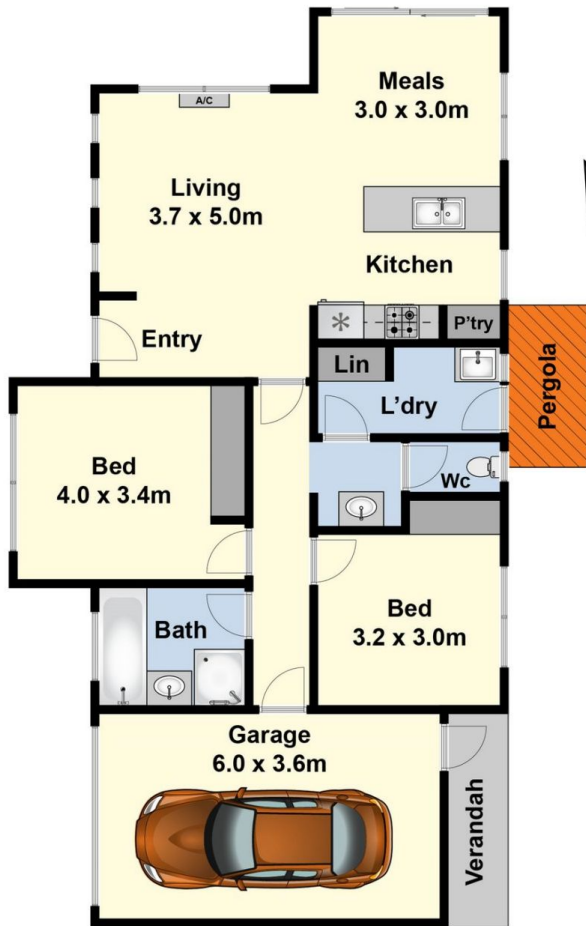


Laura Vander Noord
03 5222 4711

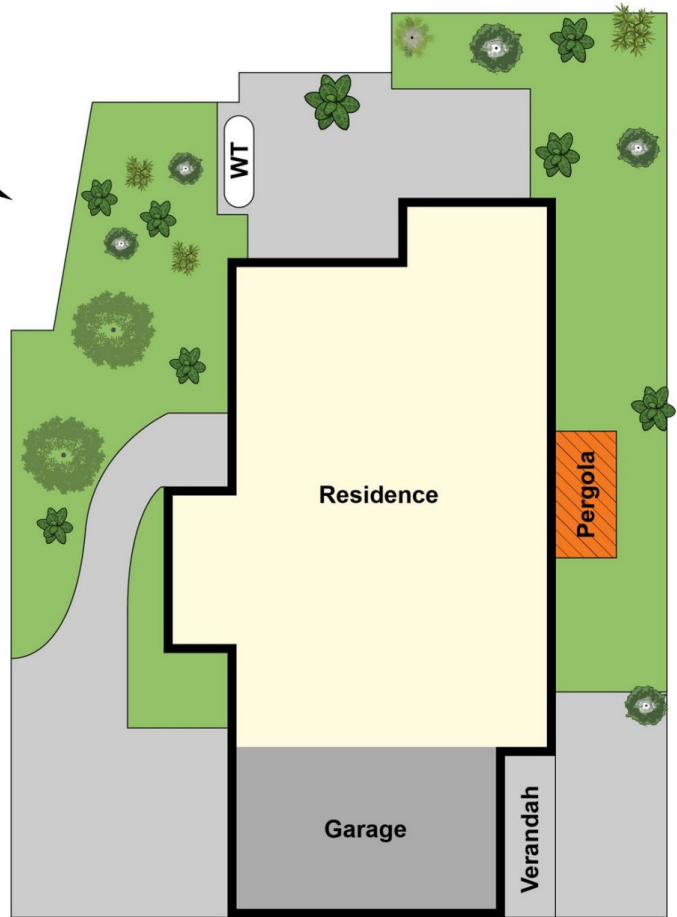


Duncan Skene
03 5222 4711

[For full version visit the website](https://www.maxwellcollins.com.au)



Ground Floor



Site Plan