

## 60 Station Road Marshall VIC

3 2 2

This neatly presented home is situated in a highly sought-after suburb of Marshall; close to the station and is ideal for first home buyers, Melbourne commuters and investors. Featuring a light filled open plan living area, a fully equipped kitchen with adjacent meals area, spacious living area and study. The main bedroom features a WIR and ensuite, a further two bedrooms both with built in robes share the central bathroom with shower and separate bath.

Outside features low maintenance garden and double lock up garage with internal access. Located only a short walk to the train station, schools, shops and easy access to Geelong CBD and Bellarine Peninsula.

**Type** : House

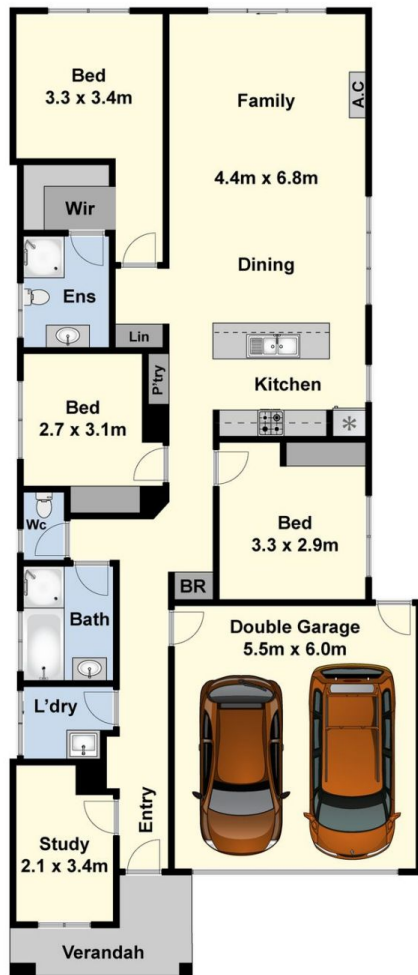
**View** : <https://www.maxwellcollins.com.au/sale/vic/geelong-district/marshall/residential/house/7457358>



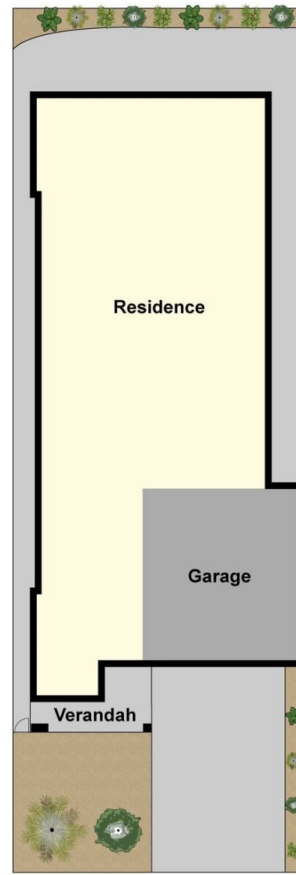
**Duncan Skene**  
03 5222 4711



**Laura Vander Noord**  
03 5222 4711



Ground Floor



Site Plan