



18 Benita Place Leopold VIC

4 2 2

Boasting a pleasant street appeal and fantastic floor plan to follow, this 4 bedroom home, plus study is sure to impress upon inspection. Located in a family friendly neighbourhood and close to schools and shops is this appealing home. The master bedroom features a WIR and ensuite, the other 3 bedrooms are also a great size with BIR's and are serviced by the family bathroom. The central kitchen features all the mod cons and with 3 living areas everyone has their own space. Outside features two decks ideal for entertaining friends and family when they come over, the low maintenance and established gardens add to the relaxing appeal of this home. Other features include large separate laundry and double garage with internal access. Your inspection will not disappoint.

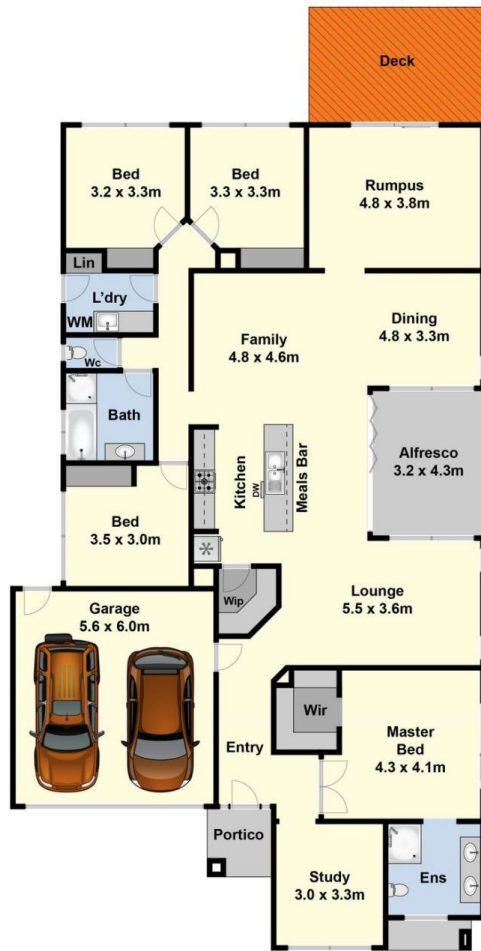
Type : House
Land Size : 660 sqm
View : <https://www.maxwellcollins.com.au/sale/vic/geelong-district/leopold/residential/house/7457355>



Duncan Skene
03 5222 4711



Laura Vander Noord
03 5222 4711



Ground Floor



Site Plan